



WALLA WALLA VALLEY
**Disability
Network**



June 2026 Newsletter

Your partnership and support of our programs, activities, and the families we serve—those who have a loved one with an intellectual or developmental disability—mean the world to us.

[Donate to Support WWVDN Programs](#)

Thank you Ability Walk & Roll Sponsors!



Sponsors of the 2026 Ability Walk & Roll:



Walla Walla County
Department of
Community Health



Thank You!

Event Sponsor: Walla Walla County Community Health

Wall of Champions Sponsor: Tiny Acres Preschool

Games Sponsors: M-F Drive In Theater, Walla Walla Transmission Specialists, and Tom's Yard Care

Awards Sponsors: Country Store Consignment & Antique Mall, Jersey Mike's, Hess Injury Law, and SMART Appliance Repair

See video highlights from the Ability Walk & Roll

Note From Parent to Parent

June brings longer days, warmer weather, and so many opportunities for connection, play, and community. As families begin preparing for summer schedules, vacations, camps, and transitions, we want to remind you that Parent to Parent is here for you every step of the way.

We also want to extend a huge thank you to everyone who attended our Ability Walk & Roll event! Seeing families, community members, and supporters come together in such an encouraging and inclusive environment was truly special. Your participation helped make the event meaningful, welcoming, and full of joy.

A special thank you goes out to our generous sponsors whose support helped make Ability Walk & Roll possible. We are incredibly grateful for those who continue to support inclusion and our

local disability community. Events like these would not happen without your partnership and encouragement.

This month, we encourage families to take advantage of simple moments together; a trip to the park, backyard play, sensory-friendly outings, or even quiet evenings at home. Connection does not have to be complicated to be meaningful.

For many families, summer can also bring changes in routine that may feel exciting for some children and challenging for others. Preparing ahead with visual schedules, conversations about upcoming events, and maintaining small daily routines can help ease transitions and create a smoother summer experience.

June is also a great time to explore community resources, recreational programs, and inclusive activities available throughout our area. Whether your family is attending camps, therapies, support groups, or simply enjoying local events, we hope you find opportunities that bring joy, confidence, and connection.

As always, thank you for allowing Parent to Parent to be part of your journey. We are continually inspired by the strength, advocacy, and love we see in our families every day.

WWVDN Events

WWVDN JUNE EVENTS OVERVIEW

June 2026



No cost to attend. For more information and to register for any event, visit www.dn.org Calendar of Events or use the QR code pictured



For children, adolescents, and adults with intellectual and developmental disabilities, as well as their families, who may feel isolated, overwhelmed, and exhausted. We offer information and connection.

For parents and caregivers of children and adults with disabilities



Parent to Parent in June

Mon, June 1, 5:00 to 7:00 pm

Papás y Mamás Especiales: dando apoyo a familias con miembros neurodivergentes

Starts - Tues, June 9, 11:30 am to 1:00 pm (Every Tuesday & Thursday)

Health Matters Program

Fri, June 19, 3:00 to 5:00 pm

Columbia County in the Park

Fri, June 26, 9:00 am to 12:30 pm

Adaptive Swim & Picnic

Parent-to-parent coordinators are available to provide one-on-one assistance with paperwork or to answer questions about disability services and support agencies.



Caregivers connect while children (12 years old or younger) play

Tues, June 9, 4:00-5:30 pm

Washington Park Splash Pad

For Parents: Relax and enjoy the company of other parents raising kids with disabilities.

For Kids: Fun at the park. Run, play, have a great time outdoors.

For children, teens, and adults with disabilities.



LIFT & RISE: For children with disabilities aged 5 to 12

Mon, June 1, 3:30 to 5:00 pm

Art Explosion Lab

Mon, June 8, 3:30 to 5:00 pm

Stem & Tinker Lab

Mon, June 15, 3:30 to 5:00 pm

Move Your Way

Mon, June 22, 3:30 to 5:00 pm

Friendship Carnival

We are combining LIFT & RISE into one group in order to facilitate friendships, offer activities for children 5-12 more frequently, and provide more opportunities to practice social skills and learn through play.



SOAR: For adolescents and adults with disabilities aged 13 and over

Thurs, June 4, 6:00 to 8:00pm

Walla Walla Sweets Baseball Game

Thurs, June 11, 5:00 to 7:00 pm

Mission (Moonlight Jewel Heist)

Sun, June 14, 1:00 to 3:00 pm

Ice Cream Social & Oregon Trail Game

Fri, June 26, 9:00 am to 12:30 pm

Adaptive Swim & Picnic

For more information on all of these events and to RSVP, please visit the Calendar of Events (button below)

Calendar of Events

Summer Movie Clubhouse

SUMMER MOVIE CLUBHOUSE

June 1 - August 6 | \$1.75



June 1 - 4
Paddington



June 8 - 11
Sonic



June 15 - 18
KPOP
Demon Hunters



June 22 - 25
Shrek
Forever After



June 29 - July 2
The SpongeBob
Movie: Search for
Squarepants



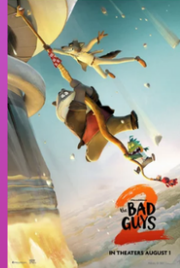
July 6 - 9
A Minecraft Movie



July 13 - 16
Dog Man



July 20 - 23
How to Train Your
Dragon



July 27 - 30
The Bad Guys 2



August 3 - 6
Gabby's Dollhouse:
The Movie

10 Weeks of mega-fun movies for kids

[More Info Here](#)

Annual Camp Kiwanis

VALLEY RESIDENTIAL SERVICES

ANNUAL CAMP KIWANIS

WEDNESDAY, JUNE 24TH

OPEN TO 10 INDIVIDUALS.

Valley Residential Services is excited to open our annual Camp Kiwanis event to the community! This free all-day event is open to individuals with intellectual or developmental disabilities. Participants are required to have a support person with them at all times. Meals will be provided during the event. For more information or questions, please contact Joe at Joe@valleyresidential.org.

Attendees can expect an afternoon of games, food, swimming (weather permitting), activities, and more.

To register, please fill out the [form](#) linked in the description below.

RSVP at WWVDN.org
Calendar of Events

Fill Out Form

Community Offerings

Coming Soon - Free Swim Lessons at YMCA in July

YMCA has received grant funding to offer 4 weeks of swim lessons (meeting 2 times each week) for children with disabilities ages 4-5 from 4:30 - 5:30 pm and children ages 6-12 from 5:30 - 7:00 pm during the month of July. Registration will open June 5 at the YMCA and an additional form will need to be filled out and submitted with your registration. Details with a link to register will follow in a separate email notice next week so keep an eye on your email inbox.



Needs Assessment Survey

WE NEED YOUR INPUT

SHARE YOUR
EXPERIENCE WITH
CARE COORDINATION

FOR AUTISTIC YOUTH WITH
MENTAL HEALTH NEEDS

Participate in an online
Needs Assessment Survey
~10-15 minutes to complete
Your input will help improve services,
training, and policy efforts.



WA INCLUDE

EDUCATE. PROMOTE. EMPOWER.



ABOUT THE STUDY

The needs assessment survey focuses on *experiences with care coordination*—service that helps youth and families find, connect, and manage health, school, & community supports—*for autistic youth with mental health needs*.

PRIVACY & CONFIDENTIALITY

Your participation is **anonymous** and **voluntary**. The survey does not collect names or identifying information. Results will be reported in group form only, and employers or service agencies will not know if you participated.

<https://redcap.link/cctp>

WHO CAN PARTICIPATE?

- Individuals 18+ years old
- Have received or provided care coordination services for autistic youth with mental health needs

Participants may include families, caregivers, autistic individuals, and service professionals—such as care coordinators, family navigators, case managers, or related positions.

COMPENSATION

Participants may choose to enter an optional drawing for a \$30 gift card. Winners are

Questions? Contact nguyentp@uw.edu

drawing for a \$50 e-gift card. winners are selected at random.

Take the Survey

Student Behavioral Health

Help shape the future of K–12 student behavioral health supports across Washington!

Complete a brief questionnaire before May 29 and be entered to win a \$150 gift card.



Your opinion matters!

Developmental Disabilities Community Services

Home and Community Living Administration



Swing Frame Recall

In April 2026, Fun and Function issued a voluntary recall of their “Multi-point suspension swing frame (model MW7761)” due to reports of the frame cracking or breaking during use and posing a fall hazard.

The frame is designed to support a therapeutic swing (sold separately) for use in therapeutic settings for neurodiverse children who benefit from vestibular input.

The swing frame was sold from May 2022 through February 2026.

This voluntary recall is in cooperation with the United States Consumer Product Safety Commission.

Fun and Function is one of our DDA contracted Specialized Equipment and Supplies vendors. They offer multiple items that meet client sensory needs under this service.

What happens next?

Fun and Function identified the individuals who purchased this swing frame and provided that information to DDA headquarters. There are nine DDA clients who purchased this device.

We will send a list of clients who were authorized this swing frame during the timeframe of May 2022 through February 2026 to regional waiver specialists to follow up, following regional process.

If a Case Resource Manager is aware of a client who was authorized and received this specific swing frame, the case manager must:

- Contact the client to inform them of this recall;
- Provide the attached recall and refund information from Fun and Function to the client and representative (if applicable) either through email or the U.S. Postal Service;
- Record the date the document was sent in a service episode record; and
- Instruct clients to contact Fun and Function for further action and assist the client if requested.

Digital Inclusion & Assistive Learning

PROGRAMS AND SERVICES

Digital Inclusion & Assistive Learning (DIAL)

Serving Walla Walla County and the Yakama Nation

What is DIAL?

DIAL will enhance opportunities in online education, employment, and community life for people with disabilities. The program's key activities include:

Assistive Technology: Providing devices and software such as screen readers, speech recognition software, hearing aids, and adaptive keyboards.

Digital Training: Conducting workshops and training sessions to improve digital skills and ensure effective use of technology.

Community Engagement: Collaborating with local organizations to promote digital inclusion and support community integration.

DIAL Program Steps

1. Assess each individual's eligibility
2. Order, deliver, and set up assistive technology
3. Train program participants to use assistive equipment
4. Educate participants through online digital literacy classes



"We understand the essential need for improving access to assistive technology for those with disabilities in our rural and tribal communities."

- Tom Gaulke, Entrust CEO

[More Info Here](#)

- [BMAC Housing Application Clinic](#) - Every Wednesday 10:00 am
- [Community Summit One-Day Virtual Conference](#) - Wednesday, June 3, at 9:00 am
- [DDCS Wants to Hear From You](#) - Thursday, June 25, at 4:00 pm
- [Developmental Disabilities Administrative Appeal Project](#)
- [Food Pantry Resources](#)
- [Project ECHO: Parent Education Series](#) - Thursdays, May 7 to June 25 12:00 pm
- [WA Developmental Disabilities Council History & Visioning Project](#)
- [Walla Walla Food Resources](#)
- [Washington State ABLE Savings Plan](#)



[Manage](#) your preferences | [Opt Out](#) using TrueRemove™

Got this as a forward? [Sign up](#) to receive our future emails.

View this email [online](#).

This email was sent to .

To continue receiving our emails, add us to your address book.

[Subscribe](#) to our email list.