

MONTHLY NEWSLETTER



NOVEMBER NEWS

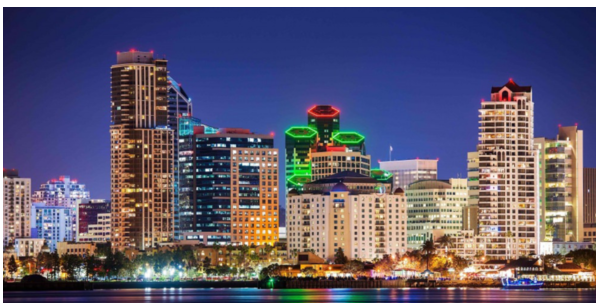


President's Message | Amber Molina, CommonWealth Partners

Although we are facing an unconventional moment in time, please rest assured that BOMA San Diego remains committed to its members and advancing the interests of the commercial real estate industry.

If you have not done so already, I highly encourage you to visit the BOMA San Diego COVID-19 Resource Center page for up to date information. You will find links to our past webinars on COVID-19 topics, local and state resources, and resources from BOMA International. This information is incredibly useful, and I have used the site as a reference several times over the course of the last few months.

[READ MORE →](#)



2021 BOMA San Diego Board of Directors Nominations | Slate & Proxy

The nominations committee has proposed the following slate of officers for the **2021 BOMA San Diego Board of Directors**. Election of the 2021 BOMA San Diego Board of Directors will take place on December 8, 2020 at the BOMA San Diego Annual Luncheon & Membership Meeting. If you

will be unable to attend the annual meeting, you may vote by proxy. Please print [this Proxy form](#), confirm your votes, scan and email the form to bae@bomasd.org.

Thank you for your membership! We look forward to #buildingresilience in 2021!

SAVE THE DATE

HAPPY THANKSGIVING | NOV. 26

BOMA SAN DIEGO 2021 MEMBERSHIP RENEWALS | TODAY - DEC. 31

MEET A PROPERTY MANAGER - BRI JOHNSON | DEC. 2

HOLIDAY GIFT DRIVE | TODAY - DEC. 21

DECEMBER MEMBERSHIP MEETING | DEC. 8

MEET A PROPERTY MANAGER - ANGIE BUSALACCHI | DEC. 16

[VIEW THE 2020 CALENDAR →](#)

COMMITTEE ANNOUNCEMENTS

BOMA San Diego's Annual Holiday Gift Drive is Underway

BOMA San Diego is once again partnering with [Promises2Kids](#) to bring 3,000+ San Diego foster youth the joy of gifts. Physical donations will be accepted now through Dec. 8 and online donations now through Dec. 21.

There are several ways to give. BOMA has set up [Walmart](#) and [Amazon](#) registry pages so you can give virtually or you can donate through our [donation page](#). You can also drop off gifts at the designated bin locations. Our goal is to collect a total of 15,000 toys! Lastly, you can send a physical gift card or check to the Promises2Kids office located at **9400 Ruffin Ct. Suite A, San Diego, CA 92123**. Click below for more information! Click [here](#) to view bin locations.

[READ MORE →](#)



MEMBERSHIP NEWS, TIPS & TRENDS

Active Shooter – Are You Prepared? | Emergency Preparedness & Sustainability Committee

You see it on the news – active shooter events occurring internationally, nationally and regionally; you've even trained in anticipation of such an event



at your property. But are you, your team and tenants really prepared?

San Diego Police Department (SDPD) Sgt. Josh DaFoe, who oversees the Mass Threat Unit in San Diego spoke with the BOMA San Diego membership at the October membership meeting. Learn more about preparation, what to do when help arrives, and more in the event recap below.

[READ MORE →](#)

Germ-Fighting Paint (and Other Unlikely Surprises) | Rachel Willis, Brad Stoner Painting

While painting is not always known for being the most tech-savvy or innovative of trades, every now and then the paint and coating manufacturers surprise us.

One of our favorite new innovations in paint is the EPA-registered product Paint Shield® Microbicial Paint, from the manufacturer Sherwin-Williams. This coating kills greater than 99.9% of a number of different bacteria. Keep reading and you just might find a solution for your next painting project!



Thank you to [Brad Stoner Painting](#) for providing this educational content.

[READ MORE →](#)



So Fetch Pet Show – a True Underdog Story | Travis Mathews, Landsystems

Votes were cast. Ballots were counted. And the PEOPLE HAVE SPOKEN! BOMA's inaugural "So Fetch Pet Show" went off spectacularly. Hosted by the Membership and Emerging Leaders Committee, the virtual pet show was an evening of laughter,

joy, and unbelievably cute animals. Congratulations to our category winners:

- Best Costume: Marley (Mary Cochran's dog)
- Best Twins: Roxy (David Osborn's dog)
- Best in Show: Topanga (Amber Molina's cat)
- People's Choice: Marley (Mary Cochran's dog)

If you missed the event, you can see the finalist videos on our YouTube channel [here](#).

Thank you to our sponsors BluSky, J&M Keystone, RSI Roofing, Sully Jones Roofing and CAM Property Services.

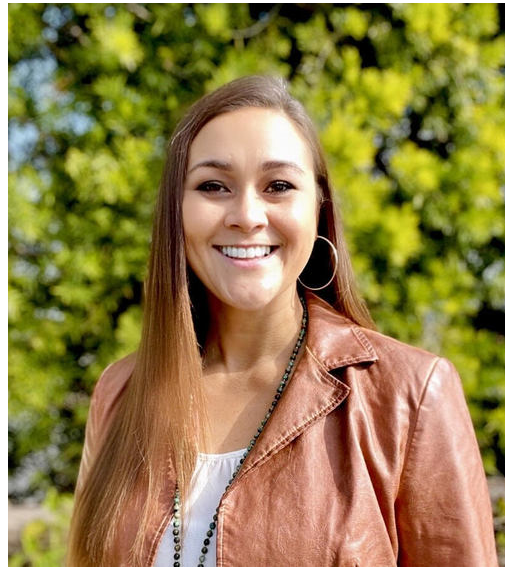
LEADERSHIP SPOTLIGHT

Stephanie Kozlowski | Paragon Engineering

Meet our latest leadership spotlight, Stephanie Kozlowski! Stephanie is the current Director of Client Services & Relations for Paragon Engineering and serves as our chapter's current co-chair of Programs & Seminars. She proudly identifies as a Pokemon GO gaming master and once tied for BOMA San Diego's "Associate Member of the Year" award (now the "Ray Magnussen Associate Member of the Year" award).

What else should you know about Stephanie? Read her complete Leadership Spotlight here to find out.

[READ MORE →](#)



NEW MEMBER SPOTLIGHT



Chris Huizenga | Swift Real Estate Partners

We are pleased to welcome one of our newest members, Chris Huizenga! Currently the Director of Operations for Swift Real Estate Partners, Chris oversees property management for Swift's Southern California portfolio and engineering for the entire Swift portfolio, in addition to expanding the Swift Property Management Platform.

Read our Q&A with Chris to learn more.

[READ MORE →](#)

WELCOME NEW MEMBERS

We'd like to extend a warm welcome to our new members!

- Cheryl Mossa | [American Assets Trust](#) | Principal
- Ted Campbell | [American Assets Trust](#) | Principal
- Juan Rose | [CBRE](#) | Principal
- Larry Figueroa | [Cypress View Properties, Inc.](#) | Principal

- Alazar Asmamaw | [Everpark](#) | Associate
- Etta Smith | [Generation Contracting & Emergency Services](#) | Associate

MESSAGE FROM OUR ENERGY SPONSORS

SDG&E Releases Sustainability Strategy to Advance Carbon Neutrality

Amid the growing urgency to address climate change and its impacts, San Diego Gas & Electric released a comprehensive sustainability strategy with aspirational goals in the areas of environmental stewardship, clean transportation, grid modernization, community engagement and company operations to support California's clean energy ambitions.



The company's holistic approach to sustainability builds on environmental, social and governance (ESG) principles, as well as its accomplishments to date. Click below to learn more.

[LEARN MORE →](#)



EDF Renewables North America and Pedernales Electric Cooperative Sign Power Purchase Agreement for King Creek 1 Wind Project

EDF Renewables North America and Pedernales Electric Cooperative Inc. (PEC), the largest distribution electric cooperative in the United States announced on Oct. 29

the signing of a 15-year Power Purchase Agreement (PPA) for a 100 megawatt (MW) share of the King Creek 1 Wind Project. Located on ranch land in Throckmorton and Haskell Counties, Texas, the King Creek project expects to begin delivering clean electricity in Q4 2021.

[Read more →](#)

SUPPORTING PARTNERS

PLATINUM PARTNERS



Services



GOLD PARTNERS



SILVER PARTNERS

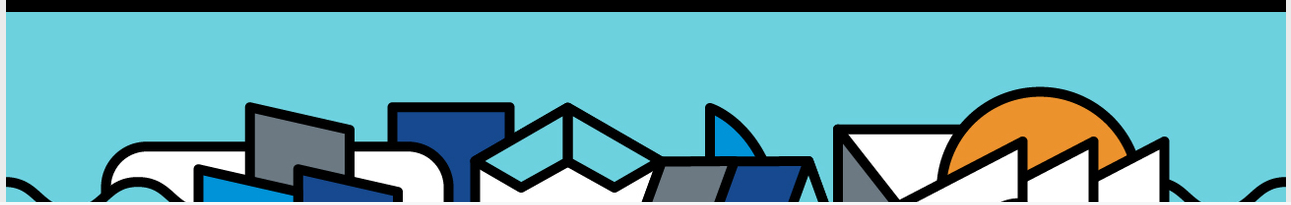


ENERGY PARTNERS





BOMASD.ORG | 619-243-1817



Share this email:



[Manage](#) your preferences | [Opt out](#) using TrueRemove®

Got this as a forward? [Sign up](#) to receive our future emails.

View this email [online](#).

3911 Fifth Avenue Suit 302
San Diego, CA | 92103 US

This email was sent to .

To continue receiving our emails, add us to your address book.

[Subscribe](#) to our email list.