

# NEWS FROM EXTENSION

UW-Madison Division of Extension Brown County



## In This Issue

- We're Hiring!
- 4-H Enrollment is now open
- Save the Date: Doctors in Recital
- Nonprofit Resources: Workshops, Conversations & Certificates
- FoodWise Community Engagement
- Food Pantries in Brown County
- Community Resource Handbooks Available for Order
- October is Mental Health Awareness Month
- Feed Summit 2022



## Brown County Extension is now hiring!

We are hiring for four open positions in our dynamic and exciting office. [Visit the Brown County Jobs site and search "Extension"](#) to see the variety of openings, encompassing health, education, community engagement, social media and design, and more! See summaries for each open position below

### **4-H Afterschool Instructor (LTE)**

4-H Afterschool Instructors will teach hands-on, pre-written robotics and coding curriculum to K-3rd grade students at 13 Green Bay Public Elementary Schools during the afterschool times of 2:30-6:00p.m. four days a week.

### **Secretary III (PTE)**

The Secretary III position is a dynamic role that supports various components of Extension

programming. To support our team, we are looking for someone who has experience in design and digital marketing. In this role, you will curate content for our monthly newsletter, submit events to local press, manage social media, create engaging content, and more! Other responsibilities include supporting educators in the office, general bookkeeping, and customer service.

**Strong Bodies Instructor (LTE)**

The StrongBodies Instructor will conduct the StrongBodies strength training program, and work with community partners to organize and promote classes. StrongBodies is offered to various age groups and genders including seniors and women. Strong Bodies is founded on the StrongWomen™ Strength Training Program based out of Tufts University which grew out of research published by Dr. Miriam E. Nelson on bone density in older adults.

**Community Garden Coordinator (FTE)**

This position builds community by increasing and enhancing community gardens to address food insecurity in Brown County. Essential duties include: Advising the community garden board; Identifying new garden sites; Maintaining current garden sites; Building relationships with landowners, gardeners, volunteers, and donors; Seeking new funding sources.

---

## 4-H is open for Enrollment

Now is the time to join 4-H or re-enroll.

Curious about 4-H in Wisconsin? Learn about the nations largest youth development organization [here](#). There are many ways to get involved. See how you and your family can join the movement with Brown County 4-H [here](#). Have more questions? Call our office at 920.391.4654

# 3 REASONS TO JOIN BROWN COUNTY 4-H

## Develop Sparks

Find things you enjoy and explore options for skill building and careers.

## Community Involvement

Take part in community service and help make our communities better places to live!

## A Place to Belong

Be part of club and project groups and develop friendships and connections!



---

## Save the date for Doctors in Recital!

Doctors in Recital is an evening of musical excellence put on by area physicians donating their time and talents to raise money for a local cause. Each act is headlined by an area physician with a passion for music, as well as a commitment to patient care.

The Doctors in Recital Concert will be on **Saturday, January 28th at 7:00PM!**

Proceeds will directly benefit the Brown County Community Garden Program!

We hope to see you there!

# DOCTORS IN RECITAL



**SATURDAY, JANUARY 28, 2023**

7PM • Tickets \$25

WEIDNER CENTER  
FOR THE PERFORMING ARTS

For tickets, go to  
[www.DoctorsInRecital.org](http://www.DoctorsInRecital.org)  
[facebook.com/DoctorsInRecital](https://facebook.com/DoctorsInRecital)

**2023 proceeds benefit:**

Brown County Community Gardens,  
Birder Studio of Performing Arts and  
GBAPS East High School Choral Department

**BIRDER**  
Studio of Performing Arts



---

## Nonprofit Resources:

UW-Madison Extension has partnered with UW-Green Bay to offer resources to nonprofit organizations in the area. We are offering a variety of educational and networking opportunities in September and October:

[Nonprofit Leader Conversations](#)←

**Community Foundation News and Updates** | October 20, 9:00 - 10:00, [Zoom Registration](#)

**Communication and Marketing Strategy** | November 3, 9:00-10:00, [Zoom Registration](#)

**Innovation in Volunteer Management** | November 17, 9:00-10:00, [Zoom Registration](#)

---

[Grant Writing Workshop](#)←

**November 10, 10:00-12:00**

With the help of Extension's Office of Access, Inclusion and Compliance this informative and hands-on virtual training on grant writing will be offered through zoom in English, Spanish, and Hmong/Hmoob. This workshop will equip you with the basic skills of grant writing, an increasingly essential method for raising money to fund projects or programs for your organization.

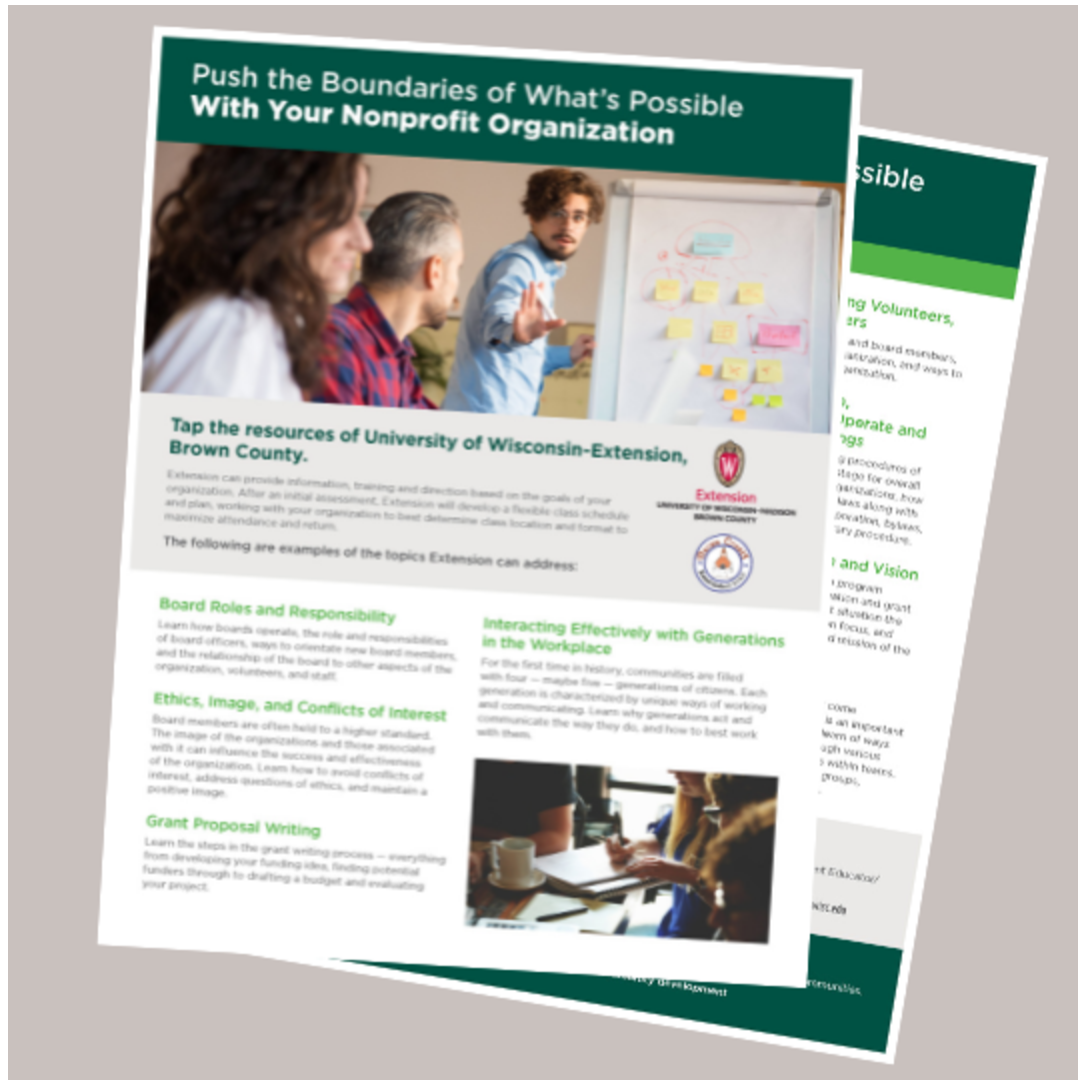
---

## Excellence in Nonprofit Leadership Certificate

There are two more sessions available for the Excellence in Nonprofit Leadership Certificate for 2022. The Excellence in Nonprofit Leadership Courses will be offered again beginning in January. Upon completing the five courses and a capstone project you will receive a continuing education badge from UW-Green Bay. If you take the following two courses you can complete the remainder and the capstone project in 2023.

**Human Resource Management** | FALL | Instructor: Tori L. England | Cost: \$169

**Marketing & Communication Strategy** | FALL | Instructor: Bridget Krage O'Connor | Cost: \$169



## FoodWise Community Engagement

FoodWise was busy last month facilitating two events, the Saturday Farmers Market Foodie Passport Activity and the Growing Vegetable Soup Story Stroll at the Central Library. Both events connected perfectly with produce, how to find it, and ways to enjoy it. We had a total of 40 families visiting our stations at both sites. We are incredibly grateful for our connection with the Saturday Farmers Market and the Brown County Library. It takes a village to engage with our community and help them make the healthy choice, the easy choice one bite at a time.





# FOOD PANTRIES IN BROWN COUNTY

Pantry Name	Address	Drop-off Day/Time	Phone Number
De Pere Christian Church	1827 Chicago Street, De Pere, WI 54115	Monday - Friday 10am-12pm	
Lion of Judah Church	512 9th Street, Green Bay, WI 54304	Thursday, 2 - 4pm	(920) 884-7555
Manna For Life	1545 University Avenue, Green Bay, WI 54302	Thursday, 10:00am -1:00pm	(920) 437-3629
Pauls Pantry	1520 Leo Frigo Way, Green Bay, WI 54302	Monday - Friday 7am-2pm, Sat 7am-1pm	
First Presbyterian Church	200 S. Ashland Avenue, Green Bay WI 54303	Tuesday and Wednesday 9:30am-2pm	(920) 437-8121
Pulaski Commnity Pantry	234 West Town Road, Pulaski, WI 54162	1st & 3rd Tuesday of each month, 1:00pm-4:00pm	(920) 822-6050
Resurrection Food Pantry	1024 Shawano Avenue, Green Bay, WI 54303	1st, 2nd, 3rd Thursday, 9-11am & 4th & 5th Thursday, 6-7pm	(920) 544-2347
Salvation Army	626 Union Court, Green Bay, WI 54303	Monday, Wednesday, Friday 11am-1pm	
Hope Center Pantry	505 Clinton Street, Green Bay, WI 54302	Monday - Thursday, 1pm-3pm	
Trinity Lutheran Church	330 S. Broadway, Green Bay, WI 54303	Tuesday, 9-11am	(920) 437-8124
Vivent Health	445 South Adams Street, Green Bay, WI 54303	Monday - Friday, 8:30am - 4:30pm	(920) 437-7400, Ext. 3112


\*Please call before dropping off a donation.

## Order Your Community Resource Handbook

The Community Resource Handbook provides descriptions and contact information for over 400 agencies and organizations that serve Brown County. Professionals will find this booklet helpful for identifying resources for those they serve.

It costs \$4.00 per copy. You can purchase copies online [here](#). Click on "make a payment" and fill out the form. When filling out the form, put "Community Resource Handbook" for the program name. You will be notified when your copies are ready for pick up.

You can view the handbook digitally by clicking [here](#).

<p>University of Wisconsin-Madison Division of Extension Brown County Extension FoodWise</p>	  
<h1>BROWN COUNTY COMMUNITY RESOURCE HANDBOOK</h1>	
	
 2019 Technology Way, Green Bay, WI 54311	
 920-391-4610	 <a href="http://browncountyextension.org">browncountyextension.org</a>

## October is Mental Health Awareness Month

Learn about the resources available to you and your community with the Brown County Mental Health Navigation Guide. This guide is a comprehensive list of "open doors" to help you and your loved ones access mental health services in our community. Everyone is at a different place in their journey, and we want you to know you are not alone no matter where you might be. Please use this guide to help



you navigate the open doors of mental health services in Brown County.

Brought to you by partnership between: Brown County Health and Human Services, Connections for Mental Wellness, Family Services Crisis Center, Brown County United Way, and 2-1-1.

For more information:

[MyConnectionNEW.org](http://MyConnectionNEW.org)

[Brown County 211](http://Brown County 211)

[Family Services Crisis Center](http://Family Services Crisis Center)

View and/or download the Mental Health Resource Guide below in English, Spanish, Hmong or Somali.

[→ENGLISH Brown County Mental Health Resource Flyer](#)

[→HMONG Brown County Mental Health Resource Flyer](#)

[→SPANISH Brown County Mental Health Resource Flyer](#)

[→SOMALI Brown County Mental Health Resource Flyer](#)



## Brown County Mental Health Navigation Guide

### Safe



MyConnectionNEW.org



MyConnectionNEW.org is a resource for mental health & substance abuse information, resources, and service navigation.

### At Risk



Call or Text 2-1-1 anytime for free assistance with human, social, mental, and basic needs and for help during disaster situations.

### Unsafe



Call 920-436-8888 anytime when immediate support is needed to prevent a situation from becoming dangerous.

### Danger



Call 9-1-1 to request immediate assistance from police, fire and rescue personnel for any in-progress situation that could potentially result in danger to someone's life.



# BE A THRIVING FOOD ENTREPRENEUR!

NOVEMBER 14-15, 2022

## WHO SHOULD COME?



Producer



Processor



Food Service

### Food & Farming Businesses

#### IDEATION Phase:

**ASPIRING Entrepreneurs** in the ideation phase generally have a great idea, have a skill, or have a key resource or property, but haven't started selling their goods or services yet.

#### STARTUP Phase:

**EARLY Entrepreneurs** in the startup phase are generally producing goods or services and selling them to customers. They might not be profitable yet, and they might be trying to grow their business. This includes many food and farming businesses in their first 5 to 10 years in business.

## WHY ATTEND?



### Learn, Connect, Promote

#### Learn Business FUNDAMENTALS

**Entrepreneurs** will learn how to start or grow their business through sessions focusing on each of the 9 parts of the Business Model Canvas, presented by business experts in the food and farming industry, and dozens of successful Wisconsin food and farming entrepreneurs will share their business stories.

#### Build Business CONNECTIONS

**Entrepreneurs** will connect with business consultants, service organizations, and other entrepreneurs through interactive sessions, networking activities, & the direct messaging functionality in the virtual platform.

#### MARKET Your Business

Entrepreneurs have the opportunity to promote their business in the exhibition area of the virtual platform. Providing links and/or promotional codes will direct attendees to buy your products during the conference.



## REGISTER TODAY!



Extension

UNIVERSITY OF WISCONSIN-MADISON  
COMMUNITY FOOD SYSTEMS

For more information contact  
Food Entrepreneurship Specialist  
Jessica Jane Spayde  
Spayde@wisc.edu, 608-225-5799  
[foodsystems.extension.wisc.edu](http://foodsystems.extension.wisc.edu)

Extension Brown County  
2019 Technology Way  
Green Bay, WI 54311  
920-391-4610

[extension@browncountywi.gov](mailto:extension@browncountywi.gov)

Share this email:



emma

[Manage](#) your preferences | [Opt out](#) using TrueRemove®

Got this as a forward? [Sign up](#) to receive our future emails.

View this email [online](#).

2019 Technology Way  
Green Bay, WI | 54311 US

This email was sent to .

*To continue receiving our emails, add us to your address book.*

[Subscribe](#) to our email list.