

FALL 2019 NEWSLETTER

Faculty Director Message

Welcome to the 2019-2020 Academic year! I am excited to begin the year with our two newest OCE team members, Kathryn Azevedo Mendoza, PhD, MA, and Wei-ting Chen, PhD, MA. Along with their expertise, and the legacy of success established by our founders, the staff and I are eager to continue to build strong projects and partnerships with the community.

We are also delighted to announce the launch of our new website [OCE.Stanford.Edu](https://oce.stanford.edu) where we hope to provide you with helpful information, resources, and an interactive view of our work.

Thank you for your support and commitment to the Office of Community Engagement. We look forward to bringing you more news and updates throughout the coming year!

In Community,

[Lisa Goldman Rosas, PhD, MPH](#)

WELCOME!



Associate Director of Research

Kathryn Azevedo Mendoza PhD, MA, (Left) focuses on ethnographic and applied mixed-methods research that seeks solutions to inequities in population health. As a behavioral health researcher, she is interested in health promotion and community level behavioral change thru solutions-oriented research and its practical application to public health policy and practice. As the Associate Director of Research in the Office of Community Engagement (OCE), she is responsible for developing and administering OCE led research projects and supporting the community engagement technical

Associate Director of Community Partnerships

Wei-ting Chen, PhD, MA, (Right) came to Stanford University after serving as the Nutrition, Family & Consumer Sciences Advisor with UC Cooperative Extension where she oversaw the local implementation of federally funded nutrition education programs, supported volunteer-led public education programs, and conducted community-engaged research projects. Her own research interests center on how poverty and social inequality shape people's life chances. She is looking forward to working with students, faculty, and community partners to build new research and education opportunities!

COMMUNITY PARTNERSHIPS



COMMUNITY PARTNER SPOTLIGHT

Examining base-building efforts with SOMOS Mayfair

SOMOS Mayfair is a grassroots organization in east San Jose, California with 22 years of experience in building community power. Their mission is to support children, organize families and connect neighbors to cultivate the dreams, power and leadership of community and address systemic inequities. In response to a recent Robert Wood Johnson Foundation call for proposals, SOMOS partnered with the Office of Community Engagement to submit a proposal to systematically examine their base-building efforts. Base-building refers to the community-led processes, infrastructure development, and relationship building methodologies that SOMOS uses to address inequitable conditions in East San Jose. Executive Director, Camille Llanes-Fontanilla, MPA, and her team at SOMOS led the effort and the Office of Community Engagement provided the research plan. The plan used a Community-Based Participatory Research approach and proposed innovative qualitative methodologies like Ripple Effects Mapping and quantitative methodologies like Social Network Analysis. [More](#)

EDUCATION



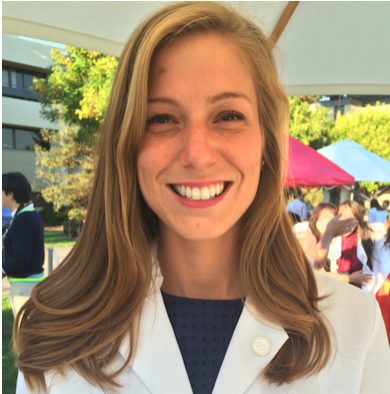
Graduate Course

Science of Community Engagement in Health-Related Research, Winter 2020, HRP272 or CHPR227

The Science of Community Engagement in Health Research course will focus on how the science of community engagement can be applied to diverse health-related research topics across the translational spectrum with the ultimate goal of high quality research that transforms human health and addresses health disparities. The course will provide

historical context, theoretical frameworks, foundational skills in diverse community engagement methodologies, and tools for examining the effectiveness of various engagement strategies aimed. [More](#)

Course Info/Registration



Summer 2019 Valley Fellows

Pictured (L-R): Courtney Pederson, MS4, Navika Shukla, MS4, Joshua Taylor, MS2

The Office of Community Engagement (OCE) Valley Fellowship Program, generously supported by the Valley Foundation, sponsors a paid fellowship program for Stanford Medicine medical students who collaborate on community-responsive research or service projects in San Mateo and Santa Clara Counties. This past summer we were excited to add three new medical students to our growing cohort of community-engaged Valley Fellows, who have provided invaluable research resources to their community partners. [More](#)

Projects:

- 1) Courtney Pedersen (Community Partner: Santa Clara County Public Health Department) Opportunities to Prevent Congenital Syphilis in Santa Clara County
- 2) Navika Shukla (Community Partner: Latino Cancer Institute) Developing Tools to Measure Progress in a Precision Medicine Intervention
- 3) Joshua Taylor (Community Partner: iMPACt Mid-peninsula Pediatric Advocacy Coalition) Mapping of Mental Health Resources in San Mateo County: The Quest For A More Patient & Provider-Friendly Mental Health Landscape.



Undergraduate Student Spotlight

Geeta Rajamani is a junior from Saint Paul, Minnesota majoring in Human Biology with a concentration in "Exploring Health Disparities Through a Big Data Lens." She's thankful for the opportunity to conduct research as part of the Office of Community Engagement to better understand issues relating to health disparities, and hopes to contribute to solutions by pursuing a medical education after undergrad. Outside of schoolwork

and research, Geeta is captain of Basmati Raas, Stanford's nationally competitive Indian dance

RESEARCH PROJECTS



African American Breast Cancer Peer Navigators

The African American Breast Cancer Peer Navigator Project was established in June 2018 to engage the African American communities in Alameda County in breast cancer research. This program is the result of a research collaboration between the OCE and the Stanford Cancer Institute. The capacity building

phase of the program included educational sessions on topics such as breast cancer disparities, best practices in primary and secondary prevention, strategies for advocacy and community engagement, breast cancer survivorship, and breast cancer clinical trials. In the activation phase, each Peer Navigator created their own plan for engaging their local community in breast cancer awareness and research. To date, the Peer Navigators have successfully carried out 10 community engagement events surrounding breast cancer awareness such as mammogram screenings and community resources, reaching over 700 women in Alameda County. These community events ranged from a public radio PSA, to a full-day conference with speakers, to collaborations with faith-based organizations. The OCE worked with the Peer Navigators to develop a conference poster that was presented at the American Association of Cancer Research Conference on The Science of Cancer Health Disparities in Racial/Ethnic Minorities and the Medically Underserved that took place in September 2019. The Peer Navigators were excited to showcase their wonderful work and speak to others about their process during this project. We are immensely appreciative and humbled by the opportunity to learn and look forward to continuing working with the Peer Navigators.



Wipe Out Melanoma

Wipe Out Melanoma (WoM) California is a collaborative program between Stanford School of Medicine's Office of Community Engagement, Oregon Health and Science University (OHSU), and Cedars-Sinai Medical Center in Los Angeles. This comprehensive effort includes educational campaigns, clinical research, and opportunities for community members to engage with the research team to develop community informed interventions

designed to prevent and detect melanoma. The team is currently building a data repository called the Melanoma Community Registry of California (MCRC). The goal of the registry is to develop a cohort of melanoma patients in California including family members and friends. The registry will form part of a national federation whereby other states will create similar registries that will provide data to the national Melanoma Registry. [More](#)

RESEARCH RESOURCES



Technical Assistance

Understanding preeclampsia and preterm birth among women with lupus

Julia Simard, ScD, Assistant Professor in the Department of Epidemiology and Population Health is an epidemiologist with expertise in understanding the health effects of lupus, especially during pregnancy. In recent grant applications, she worked with the Office of Community Engagement to incorporate mixed methods approaches to understand the

perspective of pregnant women with lupus and their providers. Her study design included cutting-edge epidemiologic techniques using three large data sets to examine preeclampsia and preterm birth among women with lupus. Then, she proposed to bring these findings to women and their providers to understand their interpretations of the findings and to identify opportunities for intervention using a series of focus groups. Lisa Goldman Rosas, PhD MPH, Faculty Director of the Office of Community Engagement, provided technical assistance in writing this aim, designing the focus groups, proposing an analysis plan, and developing the corresponding budget to complete this work.

REQUEST TECHNICAL ASSISTANCE

UPCOMING EVENTS

Wednesday, November 20, 2019, 11 am- 1 pm

Addressing Complex Trauma in American Indian & Alaska Native Communities Through Social Action

[Register Today!](#)

[Stanford University](#) | [Native American Cultural Center](#) | 524 Lasuen Mall, Stanford, CA 94305

Thursday, February 13, 2020, 4:30-8:00 pm

18th Annual Community Health Symposium

[Register & Submit an Abstract Today!](#)

[Stanford Medicine](#) | [Li Ka Shing Center for Learning & Knowledge](#) | 291 Campus Drive, Stanford, CA 94305

Wednesday, March 11, 2020, 11 am-3 pm

SPHERE Symposium

[Register Today!](#)

[Stanford Medicine](#) | [Li Ka Shing Center for Learning & Knowledge](#) | 291 Campus Drive, Stanford, CA 94305

JOIN OUR MAILING LIST

STANFORD MEDICINE | OFFICE OF COMMUNITY ENGAGEMENT | 1701 PAGE MILL ROAD | PALO ALTO, CA 94304

VISIT OUR WEBSITE



Share this email:



[Manage](#) your preferences | [Opt out](#) using TrueRemove™

Got this as a forward? [Sign up](#) to receive our future emails.

View this email [online](#).

Stanford University
Stanford, CA | 94305 United States

This email was sent to .

To continue receiving our emails, add us to your address book.

emma®

[Subscribe](#) to our email list.