

Patient Navigation and Survivorship

THE GW CANCER CENTER



December 2024 | Vol 15 | Issue 12

The GW Cancer Center is a [training and technical assistance provider](#) of the Centers for Disease Control and Prevention (CDC) National Comprehensive Cancer Control Program.

GW Cancer Center News

Happy Holidays!

As we close out the year, we want to express our sincere gratitude for your continued support and partnership. May this holiday season bring you joy, relaxation, and the opportunity to reflect on the successes we've achieved together. We look forward to another year of growth and collaboration. Wishing you a wonderful holiday season and a prosperous New Year!




New, Free Online Course: Getting Paid for Patient Navigation


Getting Paid for Patient Navigation

What You Should Know About the 2024 Physician Payment Rule

Free Online Training



Estimated completion time



- 0.50 Contact hours for nursing
- 0.50 AMA PRA Category 1 Credit™
- 0.50 CHES®/MCHES®

This free 30-minute training provides a comprehensive understanding of the new CMS guidelines and billing codes for patient navigation services. Take this training and share it with your clinical partners!

[Take the Course!](#)

Updated Patient Navigation Course Coming Soon

The GW Cancer Center is revising its free, online patient navigation course! The original course is currently paused as we prepare to upload the new version later this month.

We appreciate your patience as we put the finishing touches on the updated course. Watch this space or check our Online Academy in January to access the training!

[Visit the Online Academy](#)

The Oncology Patient Navigator Training: The Fundamentals



Updated Course Coming Soon

 Cancer Center 

Looking Ahead

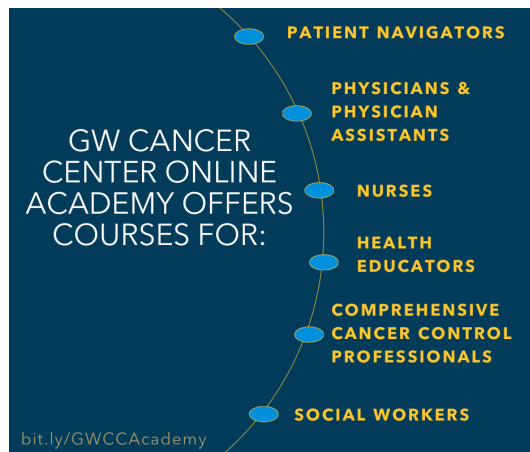
Updated Cervical Cancer Awareness Toolkit Now Available

January is Cervical Cancer Awareness month. To assist you with social media posting, the GW Cancer Center launched an updated version of the [Cervical Cancer Awareness Toolkit](#). This updated version was developed in collaboration with national partners, [Nuestras Voces Adelante](#), [National LGBT Cancer Network](#), and [Cervivor](#).



GW Cancer Center Resource Reminder

Free Trainings Available on the Online Academy



Want to brush up on your skills before the New Year begins? Look no further than the GW Cancer Center Online Academy!

You'll find a variety of courses for every learner. Courses include Sexual Health and Cancer Survivorship, Financial Navigation Lesson for Oncology Patient Navigators, and the Cancer Survivorship Series.

[Get Started Today!](#)

Upcoming Events

Dec. 17: Living Beyond Breast Cancer Webinar [Updates from the 2024 San Antonio Breast Cancer Symposium](#)

Dec. 17: NCI Office of Cancer Survivorship Webinar [Mind Your BEAT: A Community-based Intervention to Increase Physical Activity and Reduce Psychosocial Distress in Rural Cancer Survivors](#)

Jan. 7: ICF Webinar [Medicare and Medicaid Social Determinants of Health](#)

Jan. 14: NCI Office of Cancer Survivorship Webinar [Precision Integrative Medicine for Cancer Survivors](#)

Jan. 23-25: Cervivor Event [2025 Cervical Cancer Summit](#) (Rates are discounted for patients and survivors. Help set a Guinness World Record for the most patients and survivors in one room!)

Jan. 27-31: American Medical Women's Association Event [HPV Prevention Week](#)

New and Updated Resources

Archived Webinar ACS National Navigation Roundtable [Leveraging Technology to Benefit Patient Navigation Capitol](#)

Archived Webinar SelfMade Health Network [Prostate Cancer Survivorship Series: Health Equity Driven Approaches for Optimizing Outcomes in Low-Income Populations \(Part 2\)](#)

Data Brief USCS [Lung Cancer](#)

Educational Program ACS National HPV Vaccination Roundtable [Shaping Smiles, Preventing Cancer: The Oral Health Professionals Guide to HPV Vaccinations](#)

Educational Program Cancer Support Community [Cancer Transitions: Moving Beyond Treatment](#)

Infographic National Behavioral Health Network for Tobacco & Cancer Control [Prioritizing Mental Wellbeing Along the Cancer Care Continuum](#)

Report CDC [Surgeon General's Report: Eliminating Tobacco-Related Disease and Death: Addressing Disparities](#)

Report President's Cancer Panel [Enhancing Patient Navigation with Technology to Improve Equity in Cancer Care](#)

Resource Listing Foundation for Women's Cancer [Educational Materials](#)

Toolkit ACS National Colorectal Cancer Roundtable [Risk Assessment and Screening Toolkit to Detect Familial, Hereditary and Early Onset Colorectal Cancer](#)

Videos Patient Empowerment Network
[Cancer Survivorship: An Expert and a Survivor Share Inspiration and Advice](#)
[Does Diet Adjustment Impact Cancer Care?](#)

Video Triage Cancer [Understanding Medicare Part D](#)

Video Series Living Beyond Breast Cancer [Replate, Reclaim, and Redefine: Eating Well After a Diagnosis](#)

CONNECT WITH US!

Subscribe



This work was supported by Cooperative Agreement #NU58DP007539-02 from the Centers for Disease Control and Prevention (CDC). Its contents are solely the responsibility of the authors and do not necessarily represent the views of CDC.

THE GEORGE WASHINGTON UNIVERSITY

WASHINGTON, DC

[Manage](#) your preferences | [Opt Out](#) using TrueRemove™
Got this as a forward? [Sign up](#) to receive our future emails.
View this email [online](#).

800 22nd St., NW Suite 8000 | Washington, None 20052 US

This email was sent to .
To continue receiving our emails, add us to your address book.

[Subscribe](#) to our email list.