

# CPFM NEWSLETTER

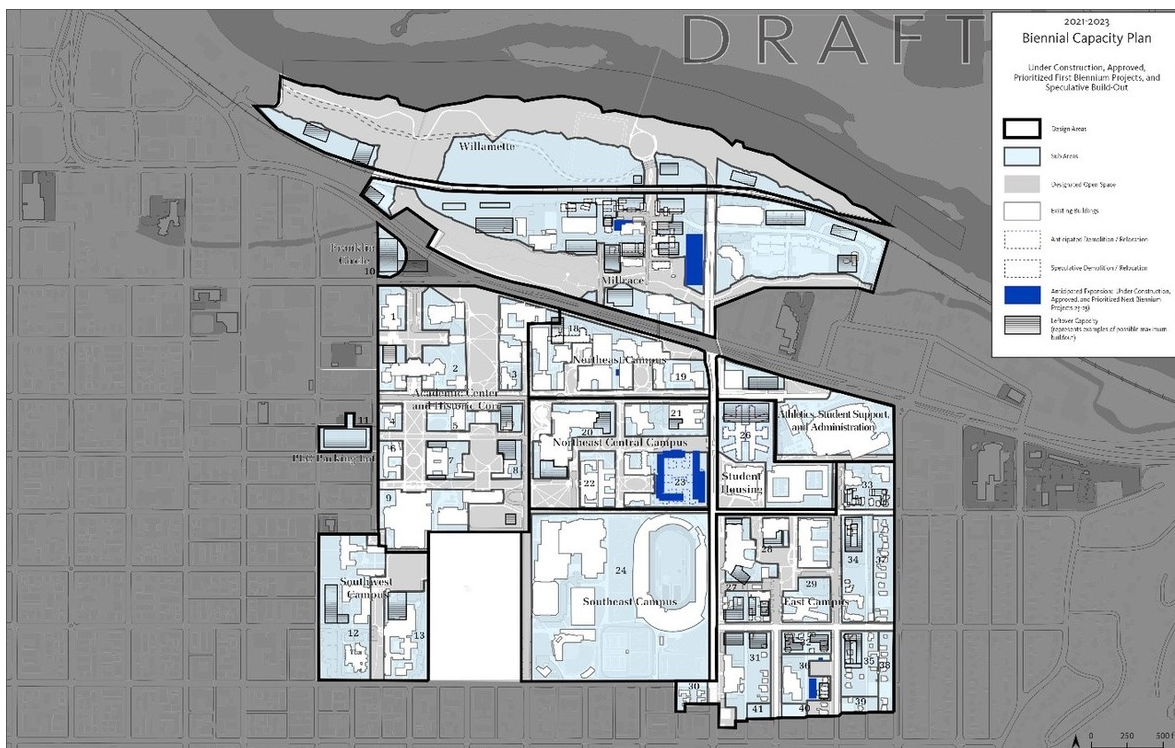
CAMPUS PLANNING & FACILITIES MANAGEMENT

2/1/2022

## 2021 - 2023 Biennial Capacity Plan (BCP)

The 2021 – 2023 Biennial Capacity Plan (BCP) was reviewed by the Campus Planning Committee in November, 2021 and approved by the president in January, 2022. The BCP is completed every two years as part of the preparation of the University of Oregon's capital construction budget proposal and compliments the Capital Plan. The purpose of the BCP is to determine the campus's development capacity and examine the ongoing effectiveness of the Campus Plan. The BCP provides a calculation of the speculative maximum buildout of campus and confirms whether:

- Sufficient land exists, in aggregate, to accommodate approved construction projects.
- Siting opportunities meeting the requirements of the Campus Plan exist for the approved projects.
- In aggregate, sufficient siting opportunities exist for the remaining identified capital projects (prioritized next biennium).



The full BCP can be found [here](#)

For more information or questions regarding the BCP, please contact [Liz Thorstenson](#) 346-5024



## Climate Survey

Dear all CPFM staff;

I am excited to share with you the first CPFM Climate Survey.

You can find it at this link: [https://oregon.qualtrics.com/jfe/form/SV\\_0obsibZMvIqaUM6](https://oregon.qualtrics.com/jfe/form/SV_0obsibZMvIqaUM6). I hope everyone will take approximately 10 minutes to complete the survey. **We have paper copies, and a Spanish translation. You can ask your supervisor for a copy.** The survey will be active for two weeks, until February 9, 2022. All survey responses – electronic and paper copies – will remain anonymous. This survey is an extension of our Quest for the Best efforts (see more at [cpfm.uoregon.edu/quest-best](http://cpfm.uoregon.edu/quest-best)), which began in the summer of 2019. Your responses will help us gauge how much progress we have made since then, as well as identifying areas of focus for the future. I anticipate making this an annual survey, which will provide valuable feedback on how we are becoming the best organization we can be.

Finally, I want to repeat that your responses to the survey will remain anonymous – both the electronic and paper versions. I will share with everyone the aggregated (summed up) responses to each question, soon after the survey closes on February 9, 2022. Thank you for taking the time to fill out the survey.

Michael A. Harwood, FAIA  
Associate Vice President and University Architect

### Years of Service

**Rick Chase**, Painter (20 years)

**Marco Diaz**, Custodian (15 years)

**Tad Lueck**, Structure & Support Manager (20 years)

**David Petersen**, Locksmith (25 years)

**LeAnna Pitts**, Assistant Director Facilities Services Work Management (5 years)

**Dale Stadler**, Facilities Engineer 3 (5 years)

**Mark Stores**, Custodian (5 years)

**Robin Wood**, Electrical Control System Technician (5 years)



To request a certificate and pin click [here](#)

**Governor's  
Employee Food  
Drive**

**Coming: February**



**COMBATING HUNGER  
IN OREGON**

Prior to the COVID-19 pandemic **1 in 11** Oregonians were food insecure, that number has increased since to **1 in 8**

In Lane County more than **1 in 3** residents are eligible for emergency food assistance



The COVID-19 pandemic has increased the number of food insecure households in Lane County and across Oregon

In addition, the 2020 wildfires are still effecting families and households of Oregon and Lane County today

There are multiple ways we can take action to support communities experiencing food insecurity:

- Donations: \$1 equals 3 meals!
- \$30 would feed a child for 3 months
- Barrel donations for shelf stable foods



**WITH 1 IN 2 SCHOOL AGED CHILDREN FACING FOOD INSECURITY;  
LET'S HELP END THIS CYCLE IN OUR LOCAL COMMUNITIES!**

CPFM donation barrels will be located in the Breezway, Design and Construction and Administration Building Reception Area.

[Most Wanted Foods](#)

[Online Giving](#)

[Payroll Deduction](#)



February is Black History Month and the theme is *Nuanced Noire*

**The Division of Equity and Inclusion has a list of events and activities online: <https://inclusion.uoregon.edu/bhm>**

A selection of February events (some virtual and some in person) are below:

All month: JSMA – 2021-2022 [Common Seeing: Meeting Points](#) – This exhibition features nine contemporary Native artists (free for UO staff, with UO ID).

Wed, Feb 2, 12pm: Center for the Study of Women in Society presents the [CSWS Noon Talk with Cassandra Gallentine](#) from the English department.

Tues, Feb 8th, 5:00-7:00pm: Straub Hall, Room 156 – [“Talking Black in America”](#) Film Screening (free)

Wed, Feb 9, 11am-1pm, Lawrence Hall Room 200 (Design Library): [Black Excellence](#) – A Pop-Up Exhibit

Wed, Feb 9, 5:30pm: in-person and remote, William W. Knight Law Center, room 110 – journalist and author A'Leia Bundles presents [“Your First Duty Is to Humanity”](#) – Echoes of Derrick Bell in Madam C. J. Walker’s Activism and Entrepreneurship, UO Law School Derrick Bell Lecture (part of the African American Workshop and Lecture Series 2021-2022) (free, registration required)

Fri, Feb 11th, 12:00pm: remote – [Books-in-Print](#) Talk: Middle Eastern American Theatre – This talk explores the burgeoning Middle Eastern American theatre movement. (free, registration required)

Fri, Feb 11th, 5:00pm: remote – [“Letting My Heart Be Broken: Healing Cultural Trauma”](#) (free)

Sat, Feb 12th, 7:00-9:30pm: EMU – UO’s LGBTQA3 Annual Drag Show: [Drag Me to Hell](#) (\$8 general admission)

Sun, Feb 13th, 3:00pm: Beall Concert Hall – [Spanish Opera Imaginings](#) - The UO Opera Ensemble presents two Spanish one-acts: Los Elementos and El Poeta Calculista (\$8)

Tues, Feb 15th, 5:00-7:00pm: Straub Hall, Room 156 - "[Signing Black in America](#)" Film Screening (free)

Wed, Feb 16th, 12:00pm: remote - "[Creating a Non-gender Binary and Queer/Women-centered Sports Space](#): Strategies and Experience of Korean 'Queer Women Games.'" Jinsun Yang, Sociology. (free)

Tues, Feb 22nd, 5:30-7:30pm: EMU Ballroom - [BE Sports with Drake Hills](#) – a talk by Hills who is driven by telling Black stories within the realm of soccer to illuminate the representation of Black men and women in the sport (free with UO ID)

Fri, Feb 25th, 7:30pm: Robinson Theater – [Once](#) – a musical about a young Irish musician who learns to trust his heart again as he is challenged and inspired by a young Czech immigrant (\$8 for UO staff)



## Kudos Korner

Dayshift Custodial Judy Haines

I am writing to you all because I have some praises related to the LRP Black Cultural Center. I want to say to whoever made it possible for Judy to return as the BCC custodian, THANK YOU! Judy is an amazing custodian and makes sure to keep our building cleaned. She has worked hard to get it back to the standard before her leave, and I want y'all to know how much I appreciate her work and diligence in keeping the BCC pristine. Judy is a joy and I appreciate her diligence to keep the BCC clean and ready for our students, UO community, guests and I'm always happy to praise the kindness of the CPFM staff who help make the BCC a place where Black students, faculty, and staff can be in community together.

Best,

Aris Hall, PhD Coordinator, Lyllye Reynolds-Parker Black Cultural Center

---

Kudos Corner for Alex Smith (Floor Crew) for some refinishing of a lab floor in Willamette.

Dear Ruby, Nick, and Linda

The floor looks fantastic -- thank you!

best wishes,

Raghu

---

From: Eric Owens

Sent: Monday, January 31, 2022 4:05 PM

To: Kevin Farthing <kfarthin@uoregon.edu>; Rodney Madison <rmadison@uoregon.edu>; Jane Brubaker <jbrub@uoregon.edu>; Jeff Butler <jbutler8@uoregon.edu>

Cc: Scott Tedder <scottt@uoregon.edu>

Subject: thank you

All-

A quick email to let you know how much we appreciate your teams efforts making the COE exterior grounds look fantastic. As you all know, I have been here a few days and I must say the Complex has not looked this good in years. Many thanks to Scott for his extra effort, attention to detail, and awesome attitude.

Thanks team for making the UO a great place to work. You all are the ones that make it happen and it is really cool when a you shine.

With gratitude,

Eric H. Owens College of Education Complex Manager

---

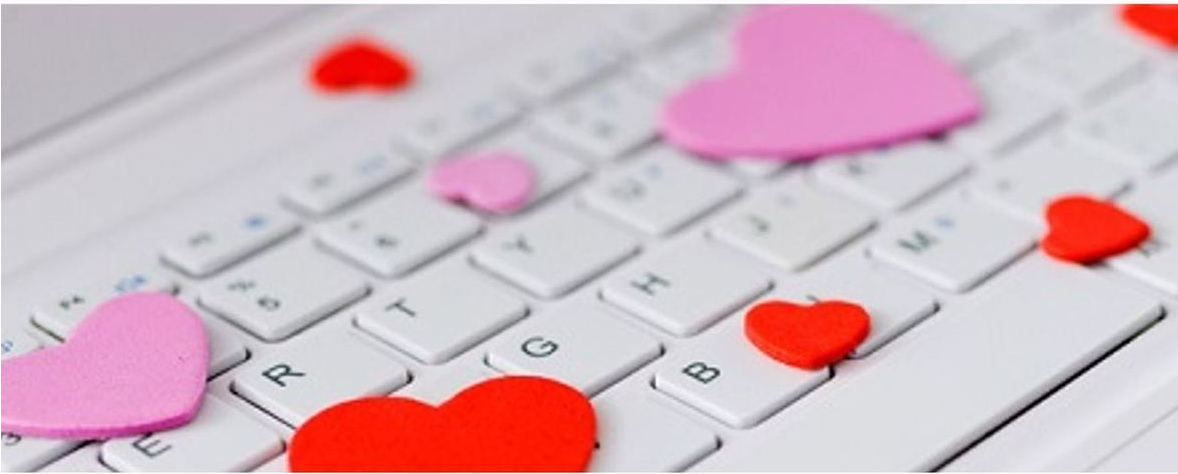
## In Memoriam

A colleague and friend of CPFM and many others, Jeremy Chambers (EHS Environmental Compliance Manager), passed away at 3:40 am Monday morning January 17th 2022 while at home with his wife and son. Jeremy had been battling an aggressive cancer for the last 12 months and had entered hospice care the Friday before passing. Jeremy was also once an employee of Campus Operations when EHS was organized within that unit, with many strong relationships generated then and maintained in years since.

Anyone with questions, or who would like to send condolences to the family, may contact EHS Director [Steve Stuckmeyer](#) by phone or email.

Steve is coordinating closely with Jeremy's family and will gladly share information as it is shared.





Sunday	Monday	Tuesday	Wednesday	Thursday	Friday	Saturday
		1 Black History Month Starts Chinese New Year	2 Groundhog Day	3 National Signing Day Golden Retriever Day	4 World Cancer Day Rosa Parks Day Wear Red Day	5
6	7 Send a Card to a Friend Day	8 Scouts of America Day Fly a Kite Day	9 Pizza Day	10	11 International Day of Women and Girls in Science	12 Lincoln's Birthday
13 Superbowl	14 Valentine's Day Donor Day	15 Singles Awareness Day Child Cancer Day	16	17 Random Acts of Kindness Day	18	19
20 Love your Pet Day	21 Presidents Day	22 George Washington's Birthday	23 Banana Bread Day	24 Chili Day	25 Pancake Day	26
27 Pokémon Day	28					

LaneKids events: <http://www.lanekids.org/events/>

Worklife resources: <https://hr.uoregon.edu/programs-services/work-life-resources>

Eugene weekly events: <https://calendar.eugeneweekly.com/venues/135001>

Athletic events: <https://goducks.com/calendar>



Campus Planning and Facilities Management @UofOCPFM · Jan 27

#icymi beautiful day on campus with signs of #spring @uoregon 🥰☀️



7,537 impressions



[cpfm.uoregon.edu](http://cpfm.uoregon.edu)

Share this email:



[Manage](#) your preferences | [Opt out](#) using TrueRemove™

Got this as a forward? [Sign up](#) to receive our future emails.

View this email [online](#).

1295 Franklin Blvd  
Eugene, OR | 97403 US

This email was sent to .

*To continue receiving our emails, add us to your address book.*

[Subscribe](#) to our email list.