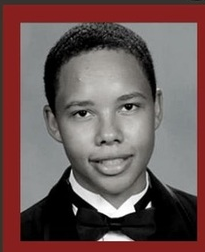


SIGNED • SEALED • DELIVERED

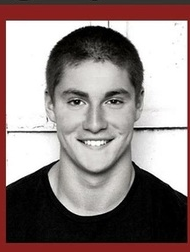
FRATERNITY & SORORITY EDITION

Love, Mom & Dad:
Turning Tragedy into Progress



MARQUISE BRAHAM

1995 - 2014



TIM PIAZZA

1997 - 2017



MAX GRUVER

1999 - 2017

A keynote presentation by Richard Braham, Evelyn & Jim Piazza, and Rae Ann & Steve Gruver

SUNDAY, NOVEMBER 11TH | 5:30 PM EST

Join us for a Livestream of this event on our [Facebook](#) page.



201
FOR

sorority women

MW
1:15-2:35

**Dr. Elise
Radina**

Fulfills social science or global
perspective Miami plan requirement.

Section limited to Miami's sorority women

Interested? Contact Dr. Elise Radina
radiname@miamioh.edu to register

SUCCESS STARTS WITH A PLAN

CAREER CLUSTERS

A new feature has been added to Handshake to allow you to select **Career Clusters** that interest you. By selecting a cluster(s) you can customize your experience with the **Center for Career Exploration & Success** and be kept up to date on programs, career events, internships/jobs, and experiential opportunities that align with your specific areas of interest. To select your clusters, go to your [Handshake](#) profile and on the top-right corner of the homepage click Career Interests. Questions? Contact [Matt Yepez](#) at the Career Center.

KAPPA ALPHA THETA'S COLOR ME CASA

ALL PROCEEDS BENEFITING BUTLER COUNTY CASA

3.5K RUN/WALK • NOVEMBER 4TH, 2018 • 10:30 AM

MIAMI UNIVERSITY CROSS COUNTRY COURSE • 5191 Bonham Rd.



Kiwanis 2018
Holiday Food Drive
Sunday, November 4 - 1:00 - 4:00 p.m.
Sponsored by KIWANIS CLUB OF OXFORD

Volunteers or Groups needed to collect Food!

All food collected will be distributed by
The Choice Pantry
Serving the Talawanda School District
for Holiday Baskets in November & December



Volunteers will go house-to-house on Sunday Nov.4, 1 pm - 4 pm
to collect canned and nonperishable food. Residents will leave
donations of food in a bag or box on their porch or apartment
entryway for collection.

**If interested, please Dave Jennings by email
(jenninda@miamioh.edu) or call 513-255-2803.**

Your help will make the holidays happier for our community.

Dog Therapy

Mondays 2:00-3:00pm

Student Counseling Service

for questions or more information call 529-4634



starts 9/10/18



MIAMI UNIVERSITY

STUDENT ACTIVITIES AND CLIFF ALEXANDER
OFFICE OF FRATERNITY AND SORORITY LIFE



Share this email:



[Manage](#) your preferences | [Opt out](#) using TrueRemove™

Got this as a forward? [Sign up](#) to receive our future emails.

View this email [online](#).

2026 Armstrong Student Center 550 E. Spring Street
Oxford, OH | 45056 US

This email was sent to .

To continue receiving our emails, add us to your address book.

emma®

[Subscribe](#) to our email list.