

City of Boulder Transportation E-Newsletter

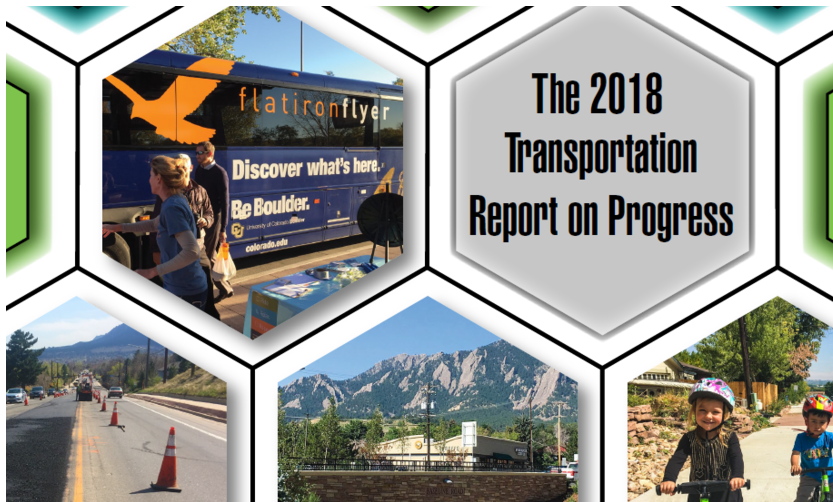


BUSBIKEWALK



Great Options to get you where you want to go

Brought to you by the City of Boulder's Transportation Division



The 2018 Transportation Report on Progress

2018 Transportation Report on Progress

The Transportation Report on Progress is a report card to the community on the implementation of the Transportation Master Plan (TMP). This plan provides the vision, goals and objectives for making Boulder's transportation system safer and more accessible for today's travelers and future generations.

Key areas of focus include core services, Vision Zero safety, complete streets, regional travel, transportation demand management, funding and integrated planning initiatives linking land use, transportation and Climate Commitment.

The report's findings emphasize the importance of continuing work in all TMP focus areas and reinforce the need for significant new efforts to meet Boulder's transportation vision, as well as the community's broader sustainability goals.

Get involved!



Kick-off Event: Transportation Master Plan Update

The city is kicking off a community-driven update to Boulder's Transportation Master Plan. We want to hear how you envision the future of transportation!

Wednesday March 21

Open House: 5:30 - 6:30 p.m.

Panel and Q&A: 6:30 - 8:30 p.m.

Featuring national visionaries on sustainable transportation, regional mobility, emerging

You can read the full report [here](#).

The 2018 report serves as a foundation and resource to guide the 2018-19 TMP update process, which will kick off on **March 21 from 5:30 - 8:30 p.m.** with a community event at the Millennium Harvest House Boulder. More info will be posted [online](#).



Winter Walk and Bike Week

The community celebrated winter walking and biking Feb. 5 - 11 with a series of fun events around town, including International Bike to Work Day on Feb. 9. More than 800 people committed to ride this winter, making [Boulder #3 in the world rankings](#). Thanks to all who joined in the fun!

Special thanks all the partners who make this week possible: Community Cycles, Boulder County, CU, Boulder Transportation Connections, Boulder Walks, Boulder Valley School District, DRCOG and Shared Paths Boulder.

If you have any suggestions or ideas for next year, let us know in the [comment form](#) on our website. Thanks!

technologies and walkable neighborhoods.



Questionnaire Closes Today!

More than 100 residents provided feedback at a Feb. 7 open house on options to improve travel for all modes in the 30th and Colorado area. Thank you to all who attended!

Missed the open house? Check out the design options and complete the [questionnaire](#) (closes Feb. 23).

East Arapahoe Transportation Plan

After extensive community feedback and technical analysis, the city has selected a recommended alternative to improve multimodal transportation through this important corridor. On Feb. 16, the Community Working Group for the project [issued a statement of findings](#) that supports this recommendation.

Missed the open house on Feb. 15? Let us know what you think about the recommended alternative through the comment form on the [webpage](#).



Do you ride the HOP?

Help us prepare for upcoming service changes!

In August 2018, HOP riders will see improvements to their normal routine. Instead of being a circular route, the route will be broken up into four segments, with more frequent and longer service hours on most routes. To help residents and visitors understand the changes, community members are invited to participate in a focus group to offer feedback on branding and communicating the changes. The focus group will meet two times this spring, with meeting dates tentatively scheduled for the evenings of March 6, 7 or 8 and April 18 or 19.

Please reach out to Natalie Stiffler, senior transportation planner with GO Boulder, at stiffeln@bouldercolorado.gov if you are interested.

Also visit the [project website](#) if you'd like to learn more about the HOP changes.



RTD Proposed Service Changes

RTD is proposing the following changes:

- Permanent discontinuation of the JUMP route West of 14th St. beginning in May 2018



Proposed Service Changes

RTD will present their proposed service changes during a [public meeting](#) on Monday, February 26 from 6 - 7 p.m.

Alfalfa's Community Room
1651 Broadway, Boulder CO



HOP service changes

Participate in a focus group to offer feedback on branding and communicating the changes

Reach out to Natalie Stiffler, senior transportation planner with GO Boulder, at stiffeln@bouldercolorado.gov if you are interested.



Sponsorship Opportunities:
15th Annual Spring
Transportation Symposium -
April 6, 2018

The 15th Annual Spring Transportation Symposium will be held on Friday, April 6, 2018, at

- Reduce BOUND, DASH, JUMP, SKIP, and STAMPEDE frequency to “summer service levels”, which includes discontinuation of school trippers on routes 204, 206, 208 and 225, for the summer service.
- Propose move of several AB trips to start and end at Boulder Junction at Depot Square Station

There will be a [public meeting](#) about these proposed changes on:

Monday, February 26 from 6 - 7 p.m

Alfalfa's Community Room

1651 Broadway, Boulder CO

Boulder Creek Path & Lighting Improvements project



To increase safety of the downtown sections of the Boulder Creek Path- West End, from 9th Street west to Eben G. Fine Park, the City of Boulder installed new pedestrian lighting along the creek.

More details about this project can be found [here](#).

the Grand Hyatt in Downtown Denver.

With this event, approximately 450 of the region's transportation planners, engineers and decision makers are brought together to share information and lessons learned from innovative and successful transportation projects.

Many sponsorship levels are available with a variety of price tags so you're sure to find the one that best meets your needs! Packages start at \$300

More info [here](#).



Broadway-Poplar Pedestrian Improvement project

The Broadway-Poplar project was initiated in response to requests from the public for a safer crossing at this intersection. The project will make the following improvements:

- Construction of an on-street crossing with a rectangular rapid flash beacon and a new pedestrian refuge island on Broadway at Poplar Ave.;
- New curb and gutter for storm water drainage along east Broadway;
- Reconstruct sections of the existing sidewalk on the east side of Broadway to improve storm drainage;
- Transit stop improvements to meet ADA requirements;
- New bikeable shoulder;
- New light pole at the northwest corner of Broadway and Poplar.

Construction will start mid-February and will about 2 months to complete, weather depending.

Construction impacts will include pedestrian detours, temporary transit stop closures or relocations,

closure of the on-street bike lane and road shoulder (bikes will merge with traffic), and vehicle lane shifts. More details can be found [here](#).

Chautauqua Pedestrian Safety, Access and Lighting Improvements project

In 2017, the city completed the majority of the improvements listed in the 2014 voter-approved [Community, Culture and Safety tax](#), which aimed to provide the community with safer, accessible pedestrian routes at Chautauqua.

Planning for the final phase of work has begun - the installation of pedestrian lighting in Chautauqua along key paths within the Chautauqua Park Historic District, from the historic trolley and current transit stop (King's Gate) and along the path to the 12th Street parking lot. More details can be found [here](#).

North Boulder Recreation Center Multi-Use Path Reconstruction



Reconstruction of the path on the east side of the North Boulder Recreation Center will begin February 26, weather dependent.

The project will:

- Reconstruct the multi-use path from asphalt to concrete

- Re-deck the pedestrian-bike bridge at 13th Street
- Replace the Farmers Ditch culvert just south of the community garden

Work will be completed in two phases, from north to south, and detours will redirect travel along Elder Avenue to Broadway and 17th Street.

Cone Zones

For the most up-to-date information on construction impacts, visit the city's Construction and Traffic Impacts webpage, [Boulder Cone Zones](#).



TransportationBoulder.net

Share this email:



[Manage](#) your preferences | [Opt out](#) using TrueRemove™

Got this as a forward? [Sign up](#) to receive our future emails.

View this email [online](#).

1739 Broadway
Boulder, CO | 80302 US

This email was sent to .

To continue receiving our emails, add us to your address book.



[Subscribe](#) to our email list.