



August 2024 | Vol 15 | Issue 8

The GW Cancer Center is a [training and technical assistance provider](#) of the Centers for Disease Control and Prevention (CDC) National Comprehensive Cancer Control Program.

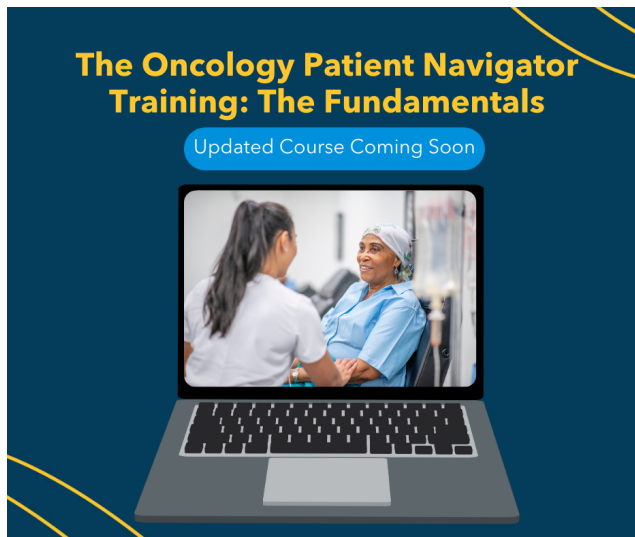
GW Cancer Center News

GW Technical Assistance Program to Launch New Comprehensive Patient Navigation Training

The GW Cancer Center Technical Assistance Program will launch a new patient navigation training this fall. Our on-demand, **FREE** online training meets the CMS requirements for Patient Navigation Training and will offer continuing education credits for social workers, nurses, and CHES/MCHES healthcare professionals.

[Go to GW Cancer Center Online Academy](#)

Visit our online academy for all of our training courses including financial navigation and survivorship courses.



New Online Training Coming Soon:
Getting Paid for Patient Navigation Services

New Course Coming Soon

Getting Paid for Patient Navigation: What You Should Know About the 2024 Physician Payment Rule



Special Topics in Patient Navigation
Getting Paid for Patient Navigation: What you should know about the 2024 Physician Payment Rule

Who can **provide** services?

Certified or trained auxiliary personnel under the **direction** of a physician or other practitioner, including a **patient navigator** or certified peer specialist

Institutions must bill for services under a qualifying billing provider, often referred to as **"incident to"** billing

- Auxiliary personnel may be external to/under contract with the practitioner or practice (e.g., a CBO) if there is "clinical integration"

GW Cancer Center



Looking Ahead

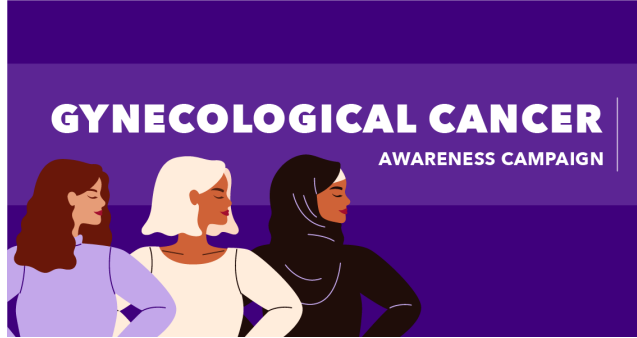
September is Childhood Cancer Awareness Month and Ovarian Cancer Awareness Month

We offer social media toolkits to assist with your September communication plan! Both toolkits offer best practices, tips on communicating with diverse audiences, and ready-to-use graphics and captions for your social media. Check them out today!

[AYA Cancer Awareness Toolkit](#)

[Gynecological Cancer Awareness Toolkit](#)





GW Cancer Center Resource Reminder

August is National Immunization Awareness Month



With school right around the corner, it's a great time to focus on vaccinations! Put our HPV Awareness toolkit to work today and share statistical data, prevention information, and social media graphics!

[View the toolkit](#)

Upcoming Events



Aug. 15: National Council for Mental Wellbeing Webinar [mHealth Apps for Tobacco Cessation and Guidance for Evaluation and Implementation](#)

Aug. 20: Michigan Program for Breast Cancer in Young Adults Webinar [Preparing for End of Life A Webinar for Caregivers & People with Cancer](#)

Aug. 22: Public Health Institute Event [Building Resilience and Self Care Workshop for Caregivers](#)

Aug. 26: Public Health Communications Collaborative Webinar [New Approaches to Vaccine Communications](#)

Aug. 28: ACS National HPV Vaccination Roundtable Webinar [HPV Vaccination Best Practices: Provider Interventions](#)

Aug. 29: CancerCare Webinar [Coping Circle Workshop: The Big "What If?" Managing the Fear of Recurrence](#)

Sep. 4-6: Great Plains Tribal Leaders Health Board Event [IHS Cancer Support Leadership Training](#)

Sep. 10: CancerCare Webinar [Current Perspectives on Cancer Survivorship](#)

Sep. 10: NCCN Event [Oncology Policy Summit: Advancing Diversity, Equity, and Inclusion in the Cancer Workforce](#)

Sep. 11: ACS National Navigation Roundtable Webinar [Enhancing Colorectal Cancer Screening Through Effective Patient Navigation: Integrating CPSTF Recommendations for Economic Impact](#)

Sep. 11: Prevent Cancer Foundation Webinar [Updates in Early Detection: Prostate Cancer Screening](#)

Sep. 12: Susan G Komen Event [2024 Navigation Nation Summit - Empowering Every Step: Navigating Through Transitions of Care](#)

Sep. 17: NCI Office of Cancer Survivorship Webinar [Implementing Patient-Reported Outcomes and Psychosocial Interventions in Diverse Communities of Cancer Survivors](#)

Sep. 19: ACS National Navigation Roundtable Event [Annual Meeting: Building on Momentum, Propelling Patient Navigation Forward Through Innovative Persistence](#)

Sep. 21: Michigan Program for Breast Cancer in Young Adults Webinar [Coping with Body Image— A Normal Part of the Cancer Experience](#)

Sep. 27-28: ASCO Event [Quality Care Symposium](#)

New and Updated Resources



Archived Webinar Michigan Program for Breast Cancer in Young Adults [Importance of Family and Clinical Communication in AYA Oncology](#)

Blog NCI [Treating the Whole Person: How Cancer Centers Are Addressing Social Needs](#)

Fact Sheet CancerCare [Misinformation and Cancer](#)

Fact Sheet FORCE [Palliative Care is Not Only for End-of-Life](#)

Fact Sheet NIH Community Engagement Alliance [Why Joining A Clinical Trial Matters](#)

Fact Sheet SelfMade Health Network [Addressing Prostate Cancer and Social Determinants of Health](#)

Guide National Center for Farmworker Health, Inc. [A Guide for Health Centers to Address Tobacco Use Among Agricultural Worker Patients \(PDF\)](#)

Learning Module Patient Empowerment Network [Digitally Empowered® | Navigating Your Patient Portal](#)

Podcast CancerCare [Cancer Out Loud - Life After Cancer: Young Adult Survivorship](#)

Report Nuestras Voces Adelante [Food Systems and Cancer Survivorship](#)

Videos Patient Empowerment Network: [Cancer Survivorship - Ongoing Healthcare and Follow-Up](#) and [Enhancing Lung Cancer Care for Black and Latinx Patients | Tackling Challenges, Implementing Solutions](#)

CONNECT WITH US!

Subscribe



This work was supported by Cooperative Agreement #NU58DP007539-01 from the Centers for Disease Control and Prevention (CDC). Its contents are solely the responsibility of the authors and do not necessarily represent the views of CDC.

THE GEORGE WASHINGTON UNIVERSITY

WASHINGTON, DC

[Manage](#) your preferences | [Opt Out](#) using TrueRemove™

Got this as a forward? [Sign up](#) to receive our future emails.

View this email [online](#).

800 22nd St., NW Suite 8000 | Washington, None 20052 US

This email was sent to .

To continue receiving our emails, add us to your address book.

[Subscribe](#) to our email list.