

MONTHLY NEWSLETTER



JANUARY NEWS

President's Message | Building Resilience in 2021

Last year, our organization began the year with the thematic approach of "Your Future in Focus." However, as we quickly learned, the COVID-19 pandemic had other plans in store for us. We promptly pivoted to the virtual event platform and continued to provide the same level of quality offerings our membership has come to value. Our social media engagement is at record levels and our BOMA San Diego chapter remains as strong as ever, further demonstrating the resiliency of our organization.

With that in mind, this year's theme for BOMA San Diego is "**Building Resilience**" and it's centered around our industry's ability to bounce back in the face of the pandemic and preparing us for all the challenges we face today, tomorrow, and beyond. Whether it's informing our membership about the impacts of new regulations, or developing our members' careers through continuing education, and virtual networking, it is a part of our mission to be your strategic business partner and help shine a light on building resilience because of the shifting dynamics of our industry.



[READ MORE →](#)

SAVE THE DATE

BOMA SAN DIEGO 2021 MEMBERSHIP RENEWALS | TODAY - JAN. 31

2021 ANNUAL SUPPORTING PARTNER REGISTRATION | TODAY - JAN. 31

BOMI CLASS | ASSET MANAGEMENT | FEB. 18 - 20

NEW MEMBER MIXER | FEB. 18

COMMITTEE ANNOUNCEMENTS

All New Members Welcome at Annual Mixer

Are you a newer BOMA San Diego Member? Do you have questions about how to get involved and take advantage of your membership? If so, please save the date for our annual **New Member Mixer** scheduled for **Thursday, February 18 at 5:30 p.m.** via Zoom.

We'll have some fun and you'll enjoy hearing from the Board of Directors and Committee Chairpersons. Putting faces with names is always helpful, and you can choose a committee to join and share your talents, as well as forge valuable connections. Register today to meet, mingle, and make the most of your membership.

[REGISTER HERE](#) →

Property Manager Download + Idea Exchange | Preparing for Building Re-Entry

Join us for the **Annual Property Manager Download + Information Exchange** on 'Preparing for Building Re-entry' on **Tuesday, February 23 at 12 p.m.** This virtual roundtable discussion will cover a variety of topics related to building re-entry – from hands-free touchless solutions to creative budgeting ideas, and the evolution of tenant and vendor interactions. This is a great opportunity for property managers from across San Diego to get involved, interact and share ideas!

This event is brought to you by the 2021 BOMA San Diego Annual Supporting Partners. Click the link below to register.

[REGISTER HERE](#) →

BOMA San Diego Collects Over \$27,000 for Community in 2020

2020 was a busy year for the Community Service Committee! Because of the generosity and support of the BOMA membership, last year we raised a total of **\$3,204** for the San Diego Food Bank, **\$20,000** for the Back-to-School Drive, collected over **600 items** of clothing for Second Chance Programs, and raised **\$14,430** and collected **10,247 gifts** for local foster youth during our annual BOMA Holiday Gift Drive. Thank you to everyone who participated in these events -- your support helped to make life a little brighter and a little easier for people in our community who were struggling and at a time when they needed it most.

LEADERSHIP SPOTLIGHT

Renato Vazquez | Kilroy Realty

Renato Vazquez of Kilroy Realty is a veteran leader in BOMA. Taking his skills from Orange County down to San Diego, he sits on the chapter's Board of Directors. He also volunteers his time on the

Communications, Government Affairs, and Membership & Emerging Leaders Committees.

Learn more about Renato and how he grew not only in the commercial real estate industry, but also within the BOMA community.

[READ MORE →](#)



KUDOS CORNER



Stacy Kurko | Shorenstein Realty

The Membership & Emerging Leaders Committee would like to recognize Stacy Kurko from Shorenstein Realty for her exemplary leadership and creativity. Stacy spearheaded our first-ever BOMA Pet Show this past fall and has again taken the reigns in planning our first virtual New Member Mixer on February 18.

Our committee can always count on her to take charge in organizing amazing events. Even though we know she's busy with her *actual* job, she always finds time for the Membership and Emerging Leaders Committee. We're lucky to have her as a member of the BOMA family!

NEW MEMBER SPOTLIGHT

Hillary Phan | LandCare

Please welcome Hillary Phan, one of our newest members and star of our latest New Member Spotlight! Currently an account manager at LandCare, Hillary is active on the Communications and Community Service committees.

Click the link below to learn more about Hillary's family, goals as a member of BOMA San Diego, and her role at LandCare.

And, watch out for this avid cyclist on the roads and bike paths of San Diego!

[READ MORE →](#)



MEMBERSHIP NEWS, TIPS & TRENDS



Landscape Enhancements | LandCare

Your property's commercial landscape is a physical extension of your brand. It has the power to invite, inspire, and welcome guests into your space, a crucial tool for the all-important first impression.

As we continue to navigate out of the pandemic in southern California, customers will return to in-person shopping, employees will head back to the office, and businesses will readjust to face-

to-face meetings. Making plans to improve your landscape now will help prepare your property for increased traffic in the spring. Click the link below to learn more.

Thank you to [LandCare](#), a 2021 BOMA San Diego [Annual Supporting Partner](#), for providing this educational content.

[READ MORE →](#)



Renew Your 2021 BOMA San Diego Membership Today!

Given the rapid changes this year, continued membership in BOMA San Diego will be critical for 2021. BOMA San Diego will offer opportunities to network with the local commercial real estate community, take educational classes and seminars, stay informed about COVID-19 and participate in legislative issues impacting commercial real estate. Your membership includes membership in BOMA International and BOMA California, providing you all

the resources you need to navigate next year and beyond.

You can renew it today via credit card submission (email the [BOMA office](#) to receive this) or you can renew via check and mail your dues to the BOMA San Diego office at **3911 Fifth Avenue, Suite 302, San Diego, CA 92103.**

[READ MORE →](#)

WELCOME NEW MEMBERS

We'd like to extend a warm welcome to our new members!

- Andrea Harris | [SDSU Research Foundation](#) | Non-Profit Member
- Lauren Winter | [Securitas](#) | Associate Member
- Daniel Soto | Pacific View Companies | Emerging Leader Principal Member
- Ryan Strzalka | [GuardTop](#) | Associate Member
- Emily Krogman | [RSI Roofing](#) | Associate Member

SUPPORTING PARTNERS

PLATINUM PARTNERS



GOLD PARTNERS

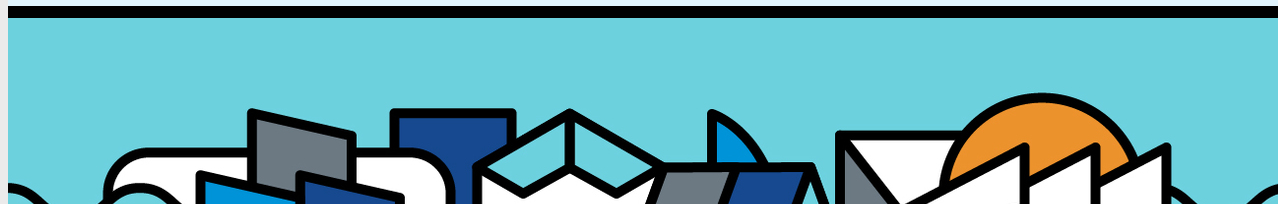


SILVER PARTNERS





BOMASD.ORG | 619-243-1817



Share this email:



[Manage](#) your preferences | [Opt out](#) using TrueRemove®

Got this as a forward? [Sign up](#) to receive our future emails.

View this email [online](#).

3911 Fifth Avenue Suit 302
San Diego, CA | 92103 US

This email was sent to .

To continue receiving our emails, add us to your address book.

[Subscribe](#) to our email list.