



ASPEN

Abuse Support & Prevention
Education Network

Monthly
Newsletter



**Thanks and
Upcoming Events
from ASPEN's
Director**

Dear Friends,

Thank you to all who attended the 8th Annual *Soup to End the Silence* event on March 23. We were delighted to see a full-house for the second year in a row!

We extend our gratitude to all the restaurants, businesses, and volunteers who donated goods or time to this event. We could not do it without you!!

April is Sexual Assault Awareness month. ASPEN is partnering with four coffee shops – RX Coffee, Coffee Crossings, CHADZ, and Coffee Creek Espresso for the “Cup of Prevention” campaign. During the entire month of April these coffee houses will be giving a portion of sales to ASPEN for its prevention programs. Please stop in and purchase coffee and treats from these local establishments and support ASPEN at the same time.

Summer will be here before you know it. **Please SAVE the DATE: Saturday, July 14th** The ATTIC will host the 3rd Annual Laugh Out Livingston event to benefit ASPEN. Join renowned comedian, Rich Hall for a laughter filled evening. The show will open with Quenby landioro – she

plays a wonderful mix of music. Tickets will go on sale soon and they will go quickly. All proceeds from this event will benefit ASPEN's work to serve victims and survivors of domestic and sexual violence.

And a reminder, ASPEN cannot do its work without your financial support. If you have not yet made a financial contribution, [please consider doing so now.](#)

Sincerely,



Heidi Barrett
Executive Director



Photos By Ri Mason Photography

**THANK YOU TO ALL OF THOSE WHO MADE SOUP TO END
THE SILENCE A GREAT SUCCESS**



THANKS TO LOCAL BUSINESSES AND INDIVIDUALS

1:1 FITNESS•49ER DINER•ABRAM BOISE•ACE HARDWARE•ALBERTSONS•AT
HOME ON THE RANGE•BARRETT FINE ART•BEANERY BETH GREGORY•B-HIVE
ARTISANS•BOB BUTTS•CAFÉ FRESH•CHICO HOT SPRINGS RESORT•CHRIS
HILLEGASS•COPPER MOOSE OIL AND VINEGAR•CRAZY MOUNTAIN
CATERING•CURATED CLOSET•THE DEPOT CENTER•ERIK'S RANCH PARADISE
VALLEY•FARMGIRL PIZZERIA AND BAKERY•FAYE'S CAFÉ•FIRST INTERSTATE
BANK•FIREFLIES POTTERY•FLORAL BOUTIQUE•FOODWORKS•FRAME
GARDEN•GIL'S GOODS•GRACE & HOLBROOK METHODISTS•JANICE
DROUT•JANE SKEOCH•JEAN KEFFELER•LIVINGSTON FOOD RESOURCE CENTER
•LOG CABIN CAFÉ•MARIA GOTTA•MEALS ON WHEELS•MELISSA FRADY•
MARANDA LEE•MONTANA LINEN SUPPLY•MT CUP•MUSTANG FRESH
FOOD•NATALIA BOISE•NEPTUNE'S BREWERY•OBSIDIAN•OPPORTUNITY
BANK•OUT OF THE BLUE ANTIQUES•PICKLE BARREL•PRINTING FOR LESS•RIE
AND CHOP HOUSE•RX COFFEE•SILVER GATE LODGING•SPIRITS•THE SHANE
CENTER•THE SOUP BAR•TIMBER TRAILS•TONJA OPPERMAN•WHEATGRASS
SALOON•WILCOXSON'S ICE CREAM•XANTERRA•
YELLOWSTONE PIONEER LODGE•RI MASON PHOTOGRAPHY

THANKS TO OUR EVENT VOLUNTEERS

Adelle Welch•Alta Ledoux•Aurora Boise•Avery Montgomery•Becca Baker
•Beth Madden•Bill Klenn•Bob Schleicher•Brian Washburn•Caleb Baker
•Chris Schleining•Cliff Brandal•Daniel Newhouse•Dave Eaton•David
Greep•Elizabeth Hewey•Ellie Printz•Emily Quillen•Finn Sexton•Isabel
Sexton•Janice Delaney•Jacob Robison•Jim Baerg•Katie Laramore•Joni
Bell•Kristin Laird•Laurel Desnick•Leanne Sudbeck•Lindie
Gibson•Lyndsey Baker•Maryanne Vollers•Nastia Baerg•Pam Thomson•Remy
Sexton•Ri Mason•Rob Bankston•Robyn Albright•Scarlett Welch•Susan
Pauli•Tim Visser•Tony Gadbury

Rural Barriers:

Unique

Challenges

By Mary Baker

ASPEN Program Advocate



Escaping domestic violence in rural settings offers unique challenges. One would think that living in a community where everyone knows you by name would bring you comfort, but the harsh reality is most homes are acres apart and no one can hear screams for help. ASPEN provides services to Park, Meagher, and Sweet Grass Counties, approximately 7,000 square miles. Domestic violence can happen anywhere and just in the last month ASPEN provided services and support for four individuals seeking safety from an abuser that lives in a rural area. There are many barriers for domestic violence survivors in rural areas, isolation being at the core of these roadblocks.

Some of the barriers are listed below:

- **Geography:** most rural homes are very far apart. A cry for help may not be heard by neighbors. If a call to police is made, the response time is usually longer, increasing the chances of assault or lethality. Internet and cell phone service may also be limited or non-existent.
- **Limited Resources:** traditional gender roles are common in rural areas. Most rural families are dependent on farming or ranching and leaving could eliminate their only source of income. Additionally, there tends to be less economic opportunity, and some rural areas suffer from high levels of poverty (domesticshelters.org, 2018). There are often no nearby resources such as domestic violence shelters that offer support for an individual leaving an abusive partner.
- **Transportation:** Rural communities typically do not have access to public transportation. The abuser often keeps the car keys so there is nowhere to escape. Road conditions during winter months are also an incredible hurdle and can prevent access to providers.
- **Lack of Anonymity and Support:** People in rural communities tend to know more about what's going on in their community, and cultural barriers can include the inability to keep the event private and concern over being judged.. Simply put, most everyone knows everyone, including police officers, judges and firefighters, increasing the chances that the officer who was called for help knows the survivor or the abuser. In some areas the courts only run on a part-time basis, so hearings for protective orders may be delayed.
- **Increased Firearms:** Hunting is very common in rural areas, making guns more common, too. A 2005 report by the U.S. Department of Justice shows that 18 percent of homicides in

rural areas were at the hands of an intimate partner, compared to 6 percent in urban areas. Studies have also shown that abusers in rural communities are more likely to cause severe injuries to their partner.

Domestic violence occurs everywhere; a victim could be your neighbor, a church member or a friend or family member. If you encounter this situation, actively listen, believe them, and help them find safety by contacting a domestic violence organization. Trained professionals are here to help.

Reference

A Rural Barrier. (2015, September 23). Retrieved April 24, 2018, from <https://www.domesticshelters.org/domestic-violence-articles-information/a-rural-barrier#.Wt-do8iUs2w>

"CUP OF PREVENTION"

Together we can end sexual
assault in our community!



JOIN US FOR THE MONTH OF APRIL

A percentage of drink
sales in the month of
April will benefit
ASPEN's prevention
programs.

ASPEN OFFERS SUPPORT

24/7 Support Line:
406-222-8154
Advocates available
7 days a week,
24 hours a day
including holidays.





APRIL 2018

April is Sexual Assault Awareness Month. This month, take the time to learn about not only the prevalence of sexual assault, but also the ways in which our culture downplays and even in some instances, promotes sexual assault, blames survivors, and consistently does not convict rapists. Ending sexual assault in our communities takes all of us--we must notice it, speak up about it, react to it, call it out, and always support and believe survivors.

If you would like more information about sexual assault prevention or want to provide an educational opportunity to your business or organization, contact ASPEN's Prevention Coordinator at abbie@aspenmt.org.



YOUR VOICE HAS POWER.

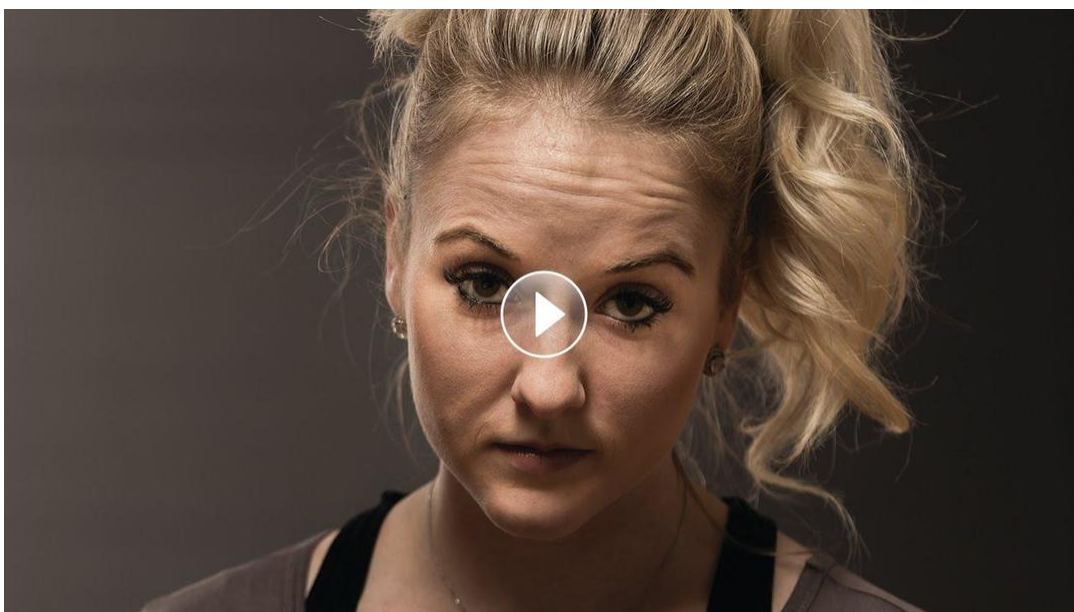
BELIEVE SURVIVORS. END VICTIM BLAMING. ASK FOR CONSENT. RESPECT BOUNDARIES.

WWW.NSVRC.ORG/SAAM

#SAAM

 **NSVRC** Sexual Assault Awareness Month

"It's On Us" by the University of Utah



Drop donations off at
411 E Callender Street

Any other disposable items
are always a necessity at
the house (paper towels,
laundry detergent, soap,
toilet paper etc.)

Thank you all for your
ongoing support!


Abuse Support & Prevention
Education Network



RELIES ON
CONTRIBUTIONS
FROM CARING PEOPLE
JUST LIKE YOU!

YOU MAY MAKE A SECURE, TAX-DEDUCTIBLE GIFT TO
ASPEN BY CLICKING ON THE DONATE BUTTON BELOW.



DONATE HERE



**FOLLOW US
ON SOCIAL
MEDIA!**



**FIND US ON FACEBOOK AND
INSTAGRAM FOR GREAT
RESOURCES, INFORMATION AND
INSPIRATION!**



ASPEN

PO Box 653 (Mailing)

411 E. Callender Street (Street)

Livingston, MT 59047

www.aspenmt.org

Office: 406-222-590224-Hour Support Line: 406-222-8154



Share this email:



[Manage](#) your preferences | [Opt out](#) using TrueRemove™

Got this as a forward? [Sign up](#) to receive our future emails.

View this email [online](#).

PO Box 653
Livingston, MT | 59047 US

This email was sent to .
To continue receiving our emails, add us to your address book.



[Subscribe](#) to our email list.