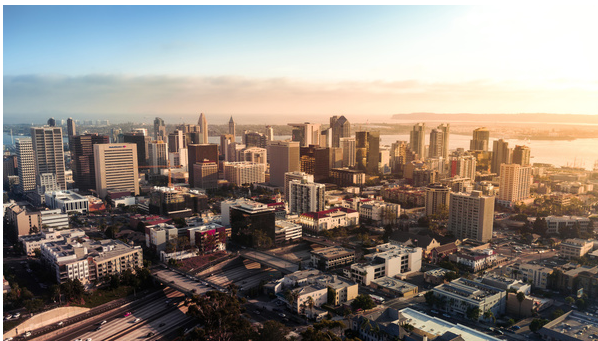


MONTHLY NEWSLETTER



OCTOBER NEWS



Government Affairs Committee Update | Craig Benedetto, Legislative Advocate

The State of CA has announced that with the adjusted positive rate numbers falling under the key threshold, San Diego County would again stay in Tier 2, or "red" category. This decision follows several successive weeks of concern that the County might slip back into the "purple" category and force a revisitation of COVID restrictions. The

region is conducting approximately 8,400 tests a day, which is well above the state median of 7,290 tests a day. The County noted that they intend to expand testing even further.

[READ MORE →](#)

SAVE THE DATE

HOLIDAY GIFT DRIVE BIN SIGN UPS | OCT. 26 - NOV. 9

BOMA SAN DIEGO 2021 MEMBERSHIP RENEWALS | NOV. 1 - DEC. 31

MEET A PROPERTY MANAGER - NICOLE MURPHY SCHUCK | NOV. 4

LUNCH + LEARN: CRE TIME MANAGEMENT | NOV. 10

[VIEW THE 2020 CALENDAR →](#)

COMMITTEE ANNOUNCEMENTS

BOMA San Diego's Annual Holiday Gift Drive Bin Sign Ups Now Open

It's almost that time of year! BOMA San Diego is partnering once more with [Promises2Kids](#) to bring 3,000+ San Diego foster youth the joy of gifts.

Now through November 9, the Community Service Committee will be accepting bin sign-ups and you can register at the link below! Volunteers will begin to drop off bins on-site from Nov. 18 - 20. Please note that every location hosting a bin needs to fill out a form; if you are requesting bins for multiple locations, please complete a form for each drop off location.

[SIGN UP HERE](#) →



MEMBERSHIP NEWS, TIPS & TRENDS



Three Time-Saving Tips for Busy Building Managers | Duthie Power Services

The elevator's stuck, the A/C needs a filter change, your staff is frantically cleaning up a spill, someone's complaining about a "funny smell" in their workroom, and as the building manager, you're on the hook for making everything better ASAP. Sound familiar? Read more to discover three timesaving tricks that every manager needs

to know.

Thank you to [Duthie Power Services](#), a 2020 BOMA San Diego [Annual Supporting Partner](#), for providing this educational content.

[READ MORE](#) →

Causes of Slab Leaks | Elvira Ocampo, ASAP Drain Guys & Plumbing

Slab leaks are leaks in plumbing that runs underneath a concrete floor slab. Most residential and small commercial buildings have a slab-on-grade foundation. It is more stable, less expensive, and faster to build. But when pipes run underneath the slab, leaks are hard to detect, and often expensive and disruptive to repair. Click below to read more!



Thank you to [ASAP Drain Guys & Plumbing](#), a 2020 BOMA San Diego [Annual Supporting Partner](#), for providing this educational content.

[READ MORE →](#)



Civil Unrest and the 2020 Election Season Preparedness Guide | BOMA International

An extraordinary year holds the unfortunate potential to become even more challenging as a string of competing crises in the United States threatens to coalesce around the 2020 election. Political instability—intensified by the convergence of an economic recession, social turmoil, and the historic

COVID-19 pandemic—has led to predictions of sustained civil unrest and possible violence. While the commercial real estate sector is accustomed to preparing for a variety of emergencies, the current landscape calls for heightened vigilance and preparations to minimize potential disruptions and protect the safety of individuals and properties.

[READ MORE →](#)

LEADERSHIP SPOTLIGHT

Courtney Johnson | CCS Facility Services

Courtney Johnson of CCS Facility Services is an exemplary BOMA San Diego leader. She co-chairs the Programs and Seminars Committee and actively participates in both the Community Service and Membership & Emerging Leaders committees.

Click on the link below to learn about Courtney's leadership journey!

[READ MORE →](#)



NEW MEMBER SPOTLIGHT

Alyssa Carpenter | Shorenstein Realty

Please welcome new BOMA member Alyssa Carpenter of Shorenstein Realty. Originally from the East Coast, the beautiful weather drew Alyssa across the country to California.

Click on the link below to read more about Alyssa.

[READ MORE →](#)



KUDOS CORNER

Andrew Areces | RSI Roofing

The Community Service Committee would like to recognize Andrew Areces of RSI Roofing. As a new committee member, Andrew jumped in feet first to spearhead the planning of a new volunteer event for Ronald McDonald House Charities.

Despite the event being rescheduled due to COVID-19, Andrew has continued to be a positive, proactive, and involved member of the committee. He is always one of the first to volunteer to help, and has been a tremendous addition to the Community Service team!



WELCOME NEW MEMBERS

We'd like to extend a warm welcome to our new members!

- Alexandra Espinoza | [CBRE](#) | Principal Member
- Inga Wright | [Cushman & Wakefield](#) | Emerging Leader Principal Member
- Hillary Phan | [LandCare](#) | Associate Member
- Deanna De La Fuente | [Kilroy Realty](#) | Principal Member
- Jessica Belcher | [Kilroy Realty](#) | Principal Member
- Antonisha Pinckney | [Kilroy Realty](#) | Principal Member
- Kathy Stanley | [Kilroy Realty](#) | Principal Member
- Liz Howeth | [Kilroy Realty](#) | Principal Member
- Renato Vazquez | [Kilroy Realty](#) | Principal Member



Electric Vehicle Owners: Get the Credit You Deserve | Message from SDG&E

If you like the acceleration of your EV, you'll love the thrill of an EV credit! If you recently purchased or leased an electric plug-in vehicle, or are thinking about making the switch to clean driving soon, be sure you apply for SDG&E's special, limited time EV credit by November 30, 2020.

Clean driving has many rewards; this special offer is just one of them. Learn more at sdge.com/EVCredit or watch this video. Plus, learn about special SDG&E pricing plans for EV owners at the link below.

[LEARN MORE →](#)

EDF Renewables North America and Geenex Solar Transact on a 4.5 gigawatt (GWac) Solar Development Portfolio | Message from EDF Renewables

EDF Renewables North America (EDFR) and Geenex Solar, LLC (Geenex), today announced the close of an agreement of up to 4.5 gigawatt (GWac) pipeline of solar development assets throughout PJM. The pipeline acquisition brings to EDF Renewables the regional development expertise of Geenex, a leader of utility-scale solar development, while EDFR contributes with its financial and late-stage development expertise from a long-term owner and operator perspective. The transaction will accelerate EDFR growth in the PJM wholesale electricity market to meet the growing demands of corporate and utility customers seeking cost-effective renewable energy sources.



[Read more →](#)

SUPPORTING PARTNERS

PLATINUM PARTNERS



Services



Landscape Services



GOLD PARTNERS



SILVER PARTNERS

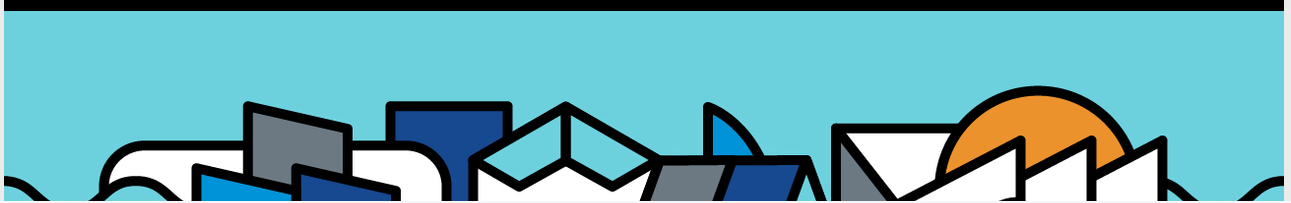


ENERGY PARTNERS



Annual Supporting Partner Directory





Share this email:



[Manage](#) your preferences | [Opt out](#) using TrueRemove®

Got this as a forward? [Sign up](#) to receive our future emails.

View this email [online](#).

3911 Fifth Avenue Suit 302
San Diego, CA | 92103 US

This email was sent to .

To continue receiving our emails, add us to your address book.

[Subscribe](#) to our email list.