

Patient Navigation and Survivorship

THE GW CANCER CENTER



March 2023 | Vol 14 | Issue 3

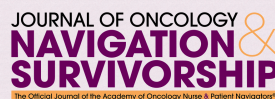
GW Cancer Center News

Colorectal Cancer Awareness Month Campaign

March is the perfect time to consult the GW Cancer Center's Colorectal Cancer Awareness Month campaign, made possible through funding and support from the Centers for Disease Control and Prevention. The campaign is designed to help implement evidence-based practices when communicating about colorectal cancer. Check out the [campaign](#) today!



Published Study Validates Tools to Assess Sexual and Gender Minority (SGM)-Affirming Care



Mandi Pratt-Chapman, PhD, Associate Director of Community Outreach and Engagement with the GW Cancer Center, co-authored an article in the Journal of Oncology Navigation and Survivorship titled The QUEering Individual and Relational Knowledge Scale (QUIRKS): Validation of Companion Measures Assessing Lesbian, Gay, Bisexual, Transgender, Queer, and Intersex-Affirming Healthcare. The [study](#) validated patient and provider scales to assess sexual and gender minority affirming care.



Upcoming Events

Mar. 18: ALAS-WINGS Event [Support Group for Young Latina Women](#)

Mar. 21: Triage Cancer Event [Insurance & Finance Intensive](#)

Mar. 23, Mar. 28: Colorectal Cancer Prevention Network Event [Colorectal Cancer: A Focused Clinical Education](#)

Mar. 24: Cancer and Careers Event [Midwest Conference on Work & Cancer](#)

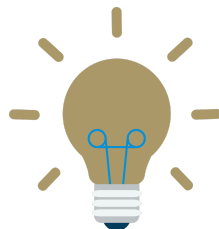
Mar. 29: National Native Network Webinar [Colorectal Cancer Prevention in the Alaska Tribal Health System](#)

Mar. 30: Young Survival Coalition Event [Virtual Hangout for African American Young Breast Cancer Survivors](#)

Apr. 3: NCI Webinar [Optimizing the Health of Cancer Patients and Survivors by Targeting the Biology and Heterogeneity of Aging](#)

Apr. 3-9: APHA Event [National Public Health Week](#)

Apr. 17-19: International Papillomavirus Society Event [International Papillomavirus Conference & Basic Science, Clinical Research and Public Health Workshops](#)





New and Updated Resources

- Archived Webinar** Oregon Nurses Association [Addressing Barriers to Care](#)
- Blog** Cancer. Net [6 Habits That Can Help You Feel More in Control of Your Health During Cancer](#)
- Guide** Patient Empowerment Network [Tools for Becoming an Educated and Empowered Prostate Cancer Patient](#)
- Guidebook** National Alliance for Caregiving [Supporting Diverse Family Caregivers: A Guide For Patient Advocacy Groups](#)
- Infographic** Patient Empowerment Network [Cultural Competence vs. Cultural Humility](#)
- Network** American Lung Association [Patient & Caregiver Network](#)
- Podcast** Conquer Cancer [A Conversation About Race in Health Care](#)
- Publication** CancerCare [Understanding The Role of Telemedicine in Treating Cancer](#)
- Resources** NCCN [Patient Resources](#)
- Resources for Cancer Caregivers, Patients and Survivors** CDC [Empowered Health](#)
- Survey (Patient)** NYU Langone Health [Medically Indicated Fertility Preservation](#)
- Tool** CDC Cancer Screening Change Packages: [Breast Cancer](#), [Cervical Cancer](#), [Colorectal Cancer](#)
- Video** Breast Cancer Resource Center [Resource Library](#)
- Video** Cancer.Net [How to Identify Cancer Misinformation Online](#)
- Video** NCCN [Best Practices and Policies for Addressing the Health Needs of LGBTQ+ Cancer Patients and Survivors](#)

GW Cancer Center Resource Reminder

Together, Equitable, Accessible, Meaningful (TEAM) Training

The GW Cancer Center's Together, Equitable, Accessible, Meaningful (TEAM) Training aims to promote health equity by supporting organizational changes at the individual and systems levels through the use of culturally sensitive practices, while facilitating patient-centered cancer care. Access [the free training](#) and share it with your colleagues and partners!

CONNECT WITH US!

Subscribe



This work was supported by Cooperative Agreement #NU58DP006461-05 from the Centers for Disease Control and Prevention (CDC). Its contents are solely the responsibility of the authors and do not necessarily represent the views of CDC.

THE GEORGE WASHINGTON UNIVERSITY

WASHINGTON, DC

[Manage](#) your preferences | [Opt Out](#) using TrueRemove™

Got this as a forward? [Sign up](#) to receive our future emails.

View this email [online](#).

800 22nd St., NW Suite 8000 | Washington, DC 20052 US

This email was sent to .

To continue receiving our emails, add us to your address book.

[Subscribe](#) to our email list.