

MONTHLY NEWSLETTER



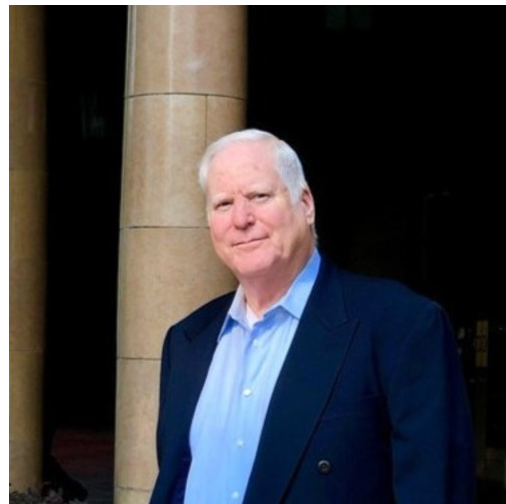
JUNE NEWS

Rex S. Hime Warns of Dangers of Split Roll Property Tax Measure

Rex S. Hime, president and CEO of the California Business Properties Association (CBPA), led a lively discussion about the onerous Split Roll Property Tax Measure during a virtual meeting on June 16.

This measure will raise taxes on business property, which will ultimately get passed on to consumers in the form of increased costs on just about everything people buy and use including groceries, fuel, utilities, daycare and health care.

Click the link below to see the full video and learn how you can help STOP HIGHER PROPERTY TAXES! BOMA San Diego would like to give a shout out to RSI Roofing for donating \$5,000 to help defeat the measure!



[VIEW VIDEO →](#)

SAVE THE DATE

MEET A PROPERTY MANAGER Q&A | JUNE 24

BACK 2 SCHOOL DRIVE | JULY 1 - AUG. 11

BUDGETING AND ACCOUNTING | JULY 30 - AUG. 1

THE DESIGN, OPERATION & MAINTENANCE OF BUILDING SYSTEMS I | AUG. 20 - 22 (RESCHEDULED)

[VIEW THE 2020 CALENDAR →](#)

COMMITTEE ANNOUNCEMENTS



Save the Date for BOMA San Diego's Virtual Back 2 School Drive Benefitting Promises2Kids

Save the date! BOMA's Annual Back 2 School Drive benefitting [Promises2Kids](#) is just around the corner. Let's help San Diego Foster Kids get the school supplies they need to succeed!

From July 1 – August 11, BOMA San Diego will be accepting donations to help provide 3,000 foster children the tools to overcome challenges and improve the possibilities for a better tomorrow. This year, in lieu of an in-person drive, we will be hosting a virtual drive to generate donations that will go directly to the unique needs foster children are facing, now more than ever, as they navigate the challenges of remote learning. This is a great opportunity to involve your company, tenants, colleagues, and friends involved for a great cause! For questions about this fundraiser, please contact subcommittee chairs [Elvia Ocampo](#) or [Courtney Johnson](#).

[Donate Here](#)

MEMBERSHIP NEWS, TIPS & TRENDS

Jump Start Your Career with CMCP

Finally, the commercial real estate industry has a professional certification that provides early recognition for foundational knowledge and guides the next generation of property managers toward greater responsibility and success in their careers: the Certified Manager of Commercial Properties (CMCP).

CMCP™ is the only certification of its kind for early-career commercial property managers – you may qualify with as little as one year's experience! Click the link below to learn more.

[READ MORE →](#)



[Split Roll Property Tax Initiative to Repeal Parts of Iconic Prop 13 Qualifies for](#)



November Ballot

An initiative that would result in higher property taxes for commercial and industrial property to provide additional funding for local governments, schools and community colleges has qualified for the November ballot. This initiative would allow for annual, unlimited reassessment of commercial and industrial properties to their fair market values. Click the link below to learn more!

[READ MORE →](#)

KUDOS CORNER

Amanda Joachim of LandCare and Travis Mathews of Landsystems

The Membership and Emerging Leaders Committee would like to say 'kudos' to two of our members this month: Amanda Joachim with Landcare Travis Mathews with Landsystems. Each have been instrumental in the planning (and postponing, and then virtually planning) many of our events this year. They are always the first ones to raise their hands to volunteer in leading or assisting our subcommittees. We appreciate their hard work and dedication to our committee and are grateful for their contributions. Thank you for being a part of BOMA San Diego, Amanda and Travis!



NEW MEMBER SPOTLIGHT

Allegra Renard | Cushman & Wakefield

BOMA San Diego welcomes one of its newest members, Allegra Renard of Cushman and Wakefield. When she found out about BOMA San Diego's Principal Membership Scholarship, she jumped at the opportunity, applied, and was awarded

a free membership for 2020. Click on the link below to learn more about Allegra!

[READ MORE →](#)



LEADERSHIP SPOTLIGHT



Teresa Henning | American Assets Trust

Say “hello” to Teresa Henning of American Assets Trust! Teresa is one of our most active principal members. Over the course of one year, she chaired both the Awards & Scholarships Committee and Emergency Preparedness & Sustainability Committee. In 2018, she earned the Principal Member of the Year award and two years later in 2020, she joined the chapter’s Board of Directors. Click below to learn more about Teresa and time with BOMA San Diego.

[READ MORE →](#)

MESSAGE FROM OUR ENERGY SPONSORS

Enroll in SDG&E Webinars at No Cost

Contractors, trade professionals, business owners and employees can take SDG&E energy-related webinars at little or no cost. Topics include Codes & Standards, Title 24 Part 6 energy codes and trends for multi-family buildings, LEED project management, residential HVAC systems for smart homes, advanced framing for energy and resource efficiency, chilled and condenser water systems and more! Check out the list of webinars and register below.



[LEARN MORE →](#)



How Indoor Plants Improve Air Quality | Message from EDF Renewables

Since more people are working from home, it's even more important that the air you breathe daily is free of pollutants. "Indoor air can be two to five times more polluted than our air outdoors," which can come as a surprise to many people. A simple solution? Indoor plants! Click the link below to read more about the benefits

of plants inside your home or office.

[READ MORE →](#)

SUPPORTING PARTNERS

PLATINUM PARTNERS



Services



BrightView
Landscape Services



GOLD PARTNERS



LandCare



PARAGON
SERVICES
ENGINEERING



SILVER PARTNERS



ENERGY PARTNERS



Annual Supporting Partner Directory



BOMASD.ORG | 619-243-1817

Share this email:



[Manage](#) your preferences | [Opt out](#) using TrueRemove®

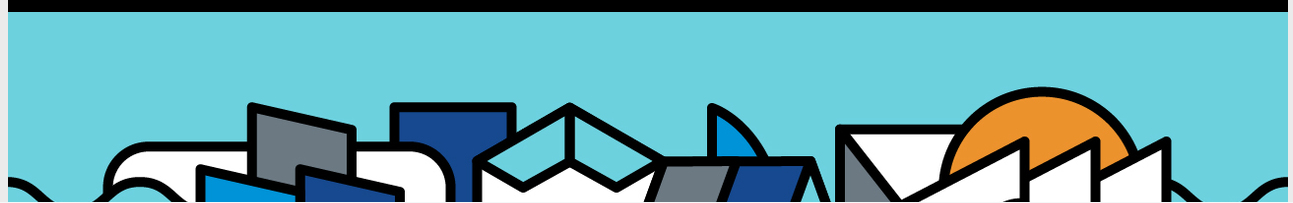
Got this as a forward? [Sign up](#) to receive our future emails.

View this email [online](#).

3911 Fifth Avenue Suit 302
San Diego, CA | 92103 US

This email was sent to .

To continue receiving our emails, add us to your address book.



[Subscribe](#) to our email list.