



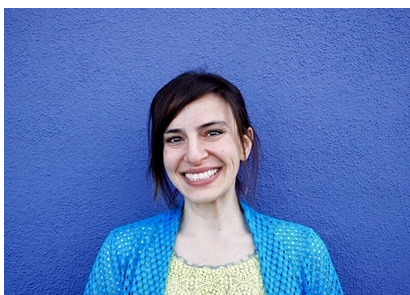
CENTER FOR RESEARCH ON TEACHING  
AND LEARNING EXCELLENCE  
OFFICE OF THE PROVOST

---

*Imagining, Creating, Innovating the Future*

## UTA CRTLE NEWSLETTER

News 25 - September 21, 2020



***Join CRTLE and the School of  
Social Work for our Fall 2020  
Speaker Series!***

**Friday, October 2, 2020, 11:00 am - 12:30 pm**

*Dr. Mays Imad, Neuroscientist and Professor of Pathophysiology and  
Biomedical Ethics, Pima Community College*

### **Leveraging the Neuroscience of Now: Trauma-Informed Pedagogy in Turbulent Times**

To be able to help students, we need to first be able to recognize trauma in ourselves. In this seminar, we will consider the neuroscience of traumatic stress and its impact on student learning. Specifically, we will address the impact of the ongoing pandemic and the long-ignored calls for racial justice on our sense of self and overall well-being. What lessons can we learn from neuroscience to help us better negotiate the pain and anxiety in ourselves and our students? How can we leverage the healing power of the community to help us move forward and help ourselves and our students continue to learn and thrive?

*Dr. Mays Imad is a neuroscientist and professor of pathophysiology and biomedical ethics at Pima Community College, the founding coordinator of the Teaching and Learning Center, and a Gardner Institute Fellow. Dr. Imad's current research focuses on stress, self-awareness, advocacy, and classroom community, and how these relate to cognition, metacognition, and, ultimately, student learning and success. Through her teaching and research, she seeks to provide her students with transformative opportunities that are grounded in the aesthetics of learning, truth-seeking, and self-realization. Dr. Imad received her undergraduate training in philosophy from the University of Michigan and her graduate training in Cellular and clinical neurobiology from Wayne State University-School of Medicine.*

[RSVP for Trauma Informed Pedagogy](#)

---

### **Introducing Our New CRTLE Staff Members!**

**Dr. Beth Fleener, Senior Teaching Innovation Research Associate**

**Dr. Nali Kim, Teaching Innovation Research Associate**



**Dr. Beth Fleener**



**Dr. Nali Kim**

**Dr. Beth Fleener** earned her Ph.D. in Curriculum and Instruction and Higher Teacher Education from Texas Tech University, her M.Ed. in Curriculum and Instruction in Mathematics Education from the University of Texas at Arlington, and B.A.S. in Communications from Dallas Baptist University. Dr. Fleener has over 3 years of experience directing the Accelerated Online Programs in College of Education where she developed a digital infrastructure to streamline multiple programs and assisted all faculty in the college in the move to online course delivery. She has been a successful educator for over 13 years with significant experience and knowledge of pedagogy in both online and face-to-face settings. Her research focuses on effective research-based teaching practices that promote successful learning environments for all students. Dr. Fleener also teaches as an adjunct faculty member in the Department of Curriculum and Instruction in the College of Education at UTA.

**Dr. Nali Kim** earned her Ed.D. in Higher Education at Southern Methodist University, her M.A. TESL with a concentration on Digital Media and Learning from the University of San Francisco, and her B.A. in International Studies from the University of California San Diego. Dr. Kim has over 8 years of experience working in education and education research and is knowledgeable and skilled in various teaching pedagogies applicable to both online and on-campus environments. Dr. Kim has significant experience in developing online courses at UTA where she formerly worked as a specialist and coordinator of the English Language Institute. Dr. Kim also teaches as an adjunct faculty member in the Department of English.



## **CRTLE FACULTY MENTOR PROGRAM**

**Calling All New Faculty in Years 1 - 3 and Experienced Faculty to Join our CRTLE Faculty Mentor Program!!**

**New faculty** are invited to join our Faculty Mentor program as Mentees. If you are a faculty member in your **first through third year** at UTA and are interested in being paired with an experienced faculty Mentor, this program is for you. The program provides informal one-to-one mentoring with an experienced UTA faculty member along with some large group mentoring events.

**\*To join this program as a **Mentee**, click [HERE](#)**

---

**Experienced faculty** are invited to serve as Mentors to provide support/advice for new faculty as they progress toward success in research, teaching, and service at UTA. To be a Mentor, you must be a tenured faculty member or have at least three years as a clinical/NTT faculty. We will pair mentors and mentees according to similar position types. Previous mentors are welcome to continue in the program with their currently assigned Mentees and can also apply to add a second new faculty Mentee.

**\*To join this program as a [Mentor](#), click [HERE](#)**

---

***Are you ready to enhance student learning and engagement  
in your online and hybrid courses?***

## **Effective Online Teaching and Hybrid Teaching Design Short Courses**

**With Friday Teams Discussion Sessions**

**Open now with ongoing enrollment**

### **Effective Online Teaching Course with Certificate**

The Effective Online Teaching Short Course guides faculty in creating effective online courses in any discipline using Canvas tools and other resources. Faculty will learn techniques, strategies, and tools to design online courses that engage students, humanize instruction, effectively measure student learning, and more.

**Mode:** Asynchronous in Canvas (on your own time). **Estimated Time to Completion:** 3 hours

**Discussion Sessions in Microsoft Teams:** Friday, October 2 and October 9, 1:00 pm - 2:00 pm

### **Hybrid Teaching Design Course with Certificate**

The Hybrid Teaching Design Course in Canvas engages faculty in learning effective practices and creating high-quality hybrid design courses for teaching. The course will address topics such as synchronous and asynchronous designs as well as lab/studio and assessment practices.

**Mode:** Asynchronous in Canvas (on your own time). **Estimated Time to Completion:** 2 hours

**Discussion Sessions in Microsoft Teams:** Friday, October 2 and October 9, 2:00 pm - 3:00 pm

[Sign Up for One or Both Short Courses](#)

---

## **More Opportunities for Faculty**

### **ACUE Course Offered**

UTA has partnered with the Association of College and University Educators (ACUE) to offer the [Course in Effective Teaching Practices](#) to a limited number of UTA faculty. New faculty in their first five years at UTA are especially encouraged to participate, though any faculty member can apply. More information about ACUE is on the Faculty Affairs website [here](#). *Applications are due Thursday, October 15.*

### **CRTLE Maverick Advantage Faculty Engagement (MAFE) Program**

Get involved in the Maverick Advantage Faculty Engagement (MAFE) Program! Visit the CRTLE website to learn about MAFE, its benefits to students, the MAFE Faculty Fellows Program, and ways to incorporate one or more of the 5 Maverick Advantage Distinguishing Activities into your courses: *Leadership Development, Undergraduate Research, Community Engagement, Career Development, Global Engagement*. [Click here to learn about the program.](#)

## Center for Distance Education (CDE) and Office of Information Technology (OIT) Trainings for Faculty

Join the Center for Distance Education (CDE) and refine your skills in using Canvas for teaching. The calendar for trainings offered by CDE and sign-up links are [here](#).

The Office of Information Technology (OIT) offers trainings in using Microsoft Teams and more. Access the OIT training schedule for faculty and sign-up links [here](#).

---

### Learn and Achieve Together

---

#### OFFICE OF THE PROVOST — CENTER FOR RESEARCH ON TEACHING AND LEARNING EXCELLENCE

ANN M.L. CAVALLO, PH.D. — ASSISTANT VICE PROVOST AND DIRECTOR OF CRTLE

ANDREW M. CLARK, PH.D. — QEP DIRECTOR AND ASSOCIATE DIRECTOR OF CRTLE

[CRTLE@uta.edu](mailto:CRTLE@uta.edu) // 817-272-7464 // <https://uta.edu/crtle>

*If you have difficulty accessing the content in this announcement, please report accessibility issues to Faculty Affairs, [facultyaffairs@uta.edu](mailto:facultyaffairs@uta.edu) or (817) 272-7422*

*Clip art credit: [Teamwork Vectors](https://www.vecteezy.com/free-vector/teamwork) by Vecteezy*

Share this email:



[Manage](#) your preferences | [Opt out](#) using TrueRemove™

Got this as a forward? [Sign up](#) to receive our future emails.

View this email [online](#).

249 Nedderman Hall Box 19128  
Arlington, TX | 76019 US

This email was sent to .

To continue receiving our emails, add us to your address book.

emma®

[Subscribe](#) to our email list.