

WYOMING PUBLIC MEDIA

General Manager's Newsletter | June 2019

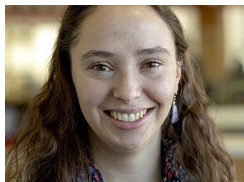


A Letter from the General Manager, Christina Kuzmych

It's all in the timing! After a long hard winter with lots of snow, we are resuming our move to Red Grade Mountain west of Sheridan. The tower base was completed last fall and the tower ready to be erected, but activity was stopped, pending new UW regulations affecting construction.... [Continue reading.](#)



BEHIND THE SCENES



Wyoming Public Media Welcomes Three Members to the Team The newsroom recently welcomed Savannah Maher as the new [Wind River Reservation Reporter](#). Savannah will be covering the Eastern Shoshone and Northern Arapahoe tribes through a grant from Report for America. Additionally, [Jeff Victor](#) and [Ivy Engel](#) joined the team as science reporting interns and will be in residence in the newsroom the summer.



Guest Speaking Abroad Wyoming Public Media's Diana Denison briefed students on Wyoming's politics and media at an International Studies class at the University of Bonn in Bonn, Germany. Denison spoke to the university's "Future of the Transatlantic Partnership" course about Wyoming politics and the role of public media in providing news coverage.



IN THE PRESS



SAFE Project Trainings Gain National Attention On May 7th, a story by Maggie Mullen aired on Here & Now. The report, produced by the Mountain West News Bureau, discusses how Albany County SAFE Project in Laramie is [aiming to help men address gender-based violence](#). The victim's advocacy group is offering trainings to prevent sexual violence and abuse.



Craft Alcohols Compete For Audience On May 9th, Maggie Mullen was featured on Marketplace for her report on craft brewing and distilling. Mullen spoke with Mike Moser, executive director of the Wyoming State Liquor Association, [about the drop in premium beer sales and the growing competition in new markets](#). As fewer people opt for traditional brands like Budweiser and Coors, new and unique offerings are growing.

NPR Aims Two Spots From Wyoming NPR newscasts featured two familiar voices in May. On May 4, NPR's newscast aired a spot by Catherine Wheeler on the retirement



of Senator Enzi. Enzi has been serving Wyoming since 1996. On May 10th, Cooper McKim spoke on NPR's newscast about the Cloud Peak Energy bankruptcy. With proximity to the company, McKim was able to report on the bankruptcy on the day it was declared.



Wyoming Perspective in Rural Journalism Wyoming Public Media's General Manager Christina Kuzmych contributed Wyoming's perspective to an article about growing foundation interest in rural journalism. The article, distributed by the Nieman Lab, explores why local foundations are putting their money behind a rural journalism collaborative. Read the full article [here](#).



TOP STORIES



Click the images below to learn more about this month's top stories.



Thanks to our new and renewing underwriters!

Campbell County Health, Carbon County Higher Education Center, Jackson Hole Center for the Arts, Cheyenne Civic Center, Cheyenne Greenway Foundation, Davis ENT, Elevation Celebration, Friends of the Cheyenne Botanic Garden, Gem City Roofing, Grand Teton Music Festival, Lander Chamber of Commerce, Laramie County Community College, Museum of the Mountain Man, Northridge Discount Liquors, Outlaw Partners, Roscoe Company, Serve Wyoming, St. John's Medical Center, Teton County Library, The Nicolaysen Art Museum, UW Center for Global Studies, UW Haub School of Environment and Natural Resources, UW National Park Research Station, UW School of Energy Resources, Wyoming Pioneer Museum, and Wyoming Weed and Pest Council

For information on becoming a sponsor, contact Dianne Burner at dburner@uwyo.edu.

DONATE



Wyoming Public Media | 1000 E University Ave, Dept. 3984 | Laramie, WY 82071
Wyoming Public Media is a service of the University of Wyoming.

Share this email:



[Manage](#) your preferences | [Opt out](#) using TrueRemove®
Got this as a forward? [Sign up](#) to receive our future emails.
View this email [online](#).

1000 E University Ave Dept 3984
Laramie, WY | 82071-2000 US

This email was sent to .
To continue receiving our emails, add us to your address book.

emma®

[Subscribe](#) to our email list.