



# Clinical Supervision Research Collaborative

SPANNING DISCIPLINES • BRIDGING BORDERS  
BUILDING A GLOBAL COMMUNITY

## CSRC Collaborator Newsletter

November 2023

### Upcoming Webinar



### **Anti-Racism in Clinical Supervision: Considerations for Practice and Research**

**Dr. Alex Pieterse, Director, Institute for the Study of Race and Culture, Boston College, USA**

**December 13, 2023 at 2:00pm (NYT)**

There is an increasing appreciation of the impact of racism on both the process and outcome of counseling and psychotherapy. Findings suggest that racism can negatively influence the utilization of services, the therapy relationship, the nature and efficacy of clinical interventions and overall treatment outcomes. Furthermore, some scholars have argued that accepted models of counseling and psychotherapy can be seen as forms of cultural imposition which are grounded in a Western/Eurocentric worldview, and therefore should be understood as a form of scientific racism. As such, the current webinar will highlight these critiques, will review findings associated with the impact of racism on psychotherapy practice, and will provide some suggestions for the role Clinical Supervision can play as a force of anti-racism in both research and practice.

Registered CSRC members will receive Zoom information prior to the start of the event.

---

## **Collaborator Research Highlight**

# Clinical Supervision in Remote Area Nursing and Primary Health Care

Fiona Hildebrand, Australia



Nurses in remote primary health care settings work in difficult conditions in isolated and disadvantaged communities, often needing to provide services beyond their scope. To identify clinical supervision models suitable for this nursing context, the authors conducted a scoping review of relevant literature. Their search of 5 journal databases yielded 251 articles; 11 met inclusion criteria. Each clinical supervision model was described and synthesised using qualitative description. The 11 models of clinical supervision had differing formats, including individual and group, in-person, telephone, medical records review, and video case study. None, however, were directly transferrable to the remote area nursing context. The absence of supervision for cultural safety was significant, as cultural considerations were lacking in all of the models.

The review identified several aspects of different models of clinical supervision that may provide properties helpful in creating a specific framework to support remote or isolated nurses. The authors proposed a contextualised model for isolated nurses that provides both face-to-face and virtual modes of clinical supervision.

This article is available to CSRC members through open access.

## Clinical Supervision for Nursing and Midwifery in Australia



Check out the [CSRC blog page](#) for a new piece from Julie Sharrock (RN. M.HSc. Ad.Dip Gestalt Ther. PhD candidate) on clinical supervision in nursing and midwifery!

**Stay Connected**

**Seeking new volunteer member(s) for the Clinical Supervision Connection Podcast Team**

Hello everyone!

**The CSC Podcast is looking for new volunteer member(s) to join our podcast team.** The Clinical Supervision Connection Podcast is designed to engage the clinical supervision community in cross-disciplinary dialogues and collaboration. By hosting voices across geographical and disciplinary contexts, this reciprocal community of researchers and practitioners will have the opportunity to learn from one another and translate knowledge to shared understandings.

We welcome new ideas and perspectives. Feel free to give some of our previous episodes a listen! <https://csrcollaborative.org/podcast/>

### **Expectations:**

New volunteer member(s) would be expected to meet once every two weeks via Zoom, be active in the clinical supervision community, and attend interviews with podcast guests.

People who are bilingual/multilingual, have experience with audio editing, grant application experience, and in fields outside of psychology (nursing, social care, etc.) are encouraged to reach out. Students are also welcome to reach out.

If you are interested in joining our fun international team, please tell us a little about yourself through email at [CSCConnectionPodcast@gmail.com](mailto:CSCConnectionPodcast@gmail.com)

We are looking forward to meeting you!

The CSC Podcast Team

---



## **The CSRC Community is Growing!**

The CSRC is an ever-expanding community of collaborators, professionals, and students interested in clinical supervision. We are proud of the international network of members who make the CSRC special! Our collaborator base includes members from the following countries:

Australia, Bangladesh, Brazil, Canada, Chile, China, Egypt, Finland, Germany, Hong Kong, Iceland, India, Ireland, Malta, Mexico, Nepal, New Zealand, Singapore, Switzerland, Taiwan, Turkey, UK, and USA

We are excited to see our community continue to grow!

---

## **Share your recent clinical supervision research publications!**

We love featuring recent clinical supervision research studies authored by CSRC members in the newsletter!

CSRC members are invited to share their recent publications of empirical work for upcoming newsletters!

Just email a brief blurb (no more than 150 words) of the study, along with a copy of the article, to DiAnne at [borders@uncg.edu](mailto:borders@uncg.edu). *In the blurb, please summarize the **goal and main findings** of the study and state **clear and specific implications for supervision researchers, practitioners, and/or educators**.* Finally, include the article DOI and indicate whether the full article is available to CSRC members through ResearchGate, open access, or another source.

*Note.* By submitting your article to share in the newsletters, you are also agreeing for your write-up to be shared on our CSRC social media accounts. English summaries of non-English research publications are welcome!

## In Case You Missed It...

### Database of Clinical Supervision Measures

Looking for a brief, practical measure of evidence-based supervision interventions? Check out the latest measure - the Evidence-Based Clinical Supervision Strategies scale (EBCSS; Choy-Brown et al., 2023) - added to the database of clinical supervision instruments on the CSRC website. (use the Learn link, then Resources)

### Webinars

Recordings of past CSRC webinars are now available on the CSRC website to view at your convenience. Learn about the supervisee's perspective on effective supervision (October webinar), and clinical supervision in humanitarian settings (November webinar). [You can watch these most recent webinars here](#), in addition to all previously recorded webinars.

### Blogs

[Read blog posts](#) written by CSRC Collaborators, advisory board members, and founders. Interested in writing a blog post? Email us at [info@csrcollaborative.org](mailto:info@csrcollaborative.org) for guidelines.

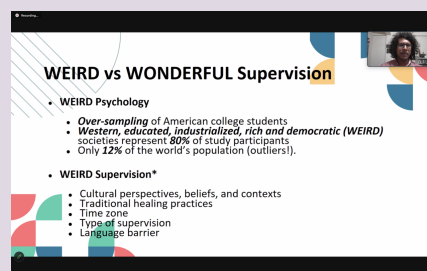
### Clinical Supervision Connection Podcast

Did you know the CSRC has a podcast focused on clinical supervision across disciplines and the globe? Catch up on [previous episodes](#) on our website.

### Newsletters

Previous newsletters - with other research highlights and information - can be found on the CSRC website. Click [here](#) to view the archive.

### November 2023 Webinar



This month's webinar drew in participants from across the world to discuss clinical supervision for humanitarian mental health workers - those who are in Syria and Bangladesh working with survivors of earthquakes, are living amidst war/fighting, are in refugee camps, and more. Thank you so much to Dr. Ruth Wells, Salah Lekkeh, Sabiha Jahan, and Dr. Omar Faruk for conducting this impactful presentation. You can view a recording of the webinar on the [CSRC website](#).

CSRC Collaborators, feel free to share this newsletter with a clinical supervision colleague.

Did a Collaborator send this newsletter to you? You can join the CSRC for free at our website.

Visit our website!



[Manage](#) your preferences | [Opt Out](#) using TrueRemove™

Got this as a forward? [Sign up](#) to receive our future emails.

View this email [online](#).

1400 Spring Garden Street None | Greensboro, NC 27412 US

This email was sent to .

*To continue receiving our emails, add us to your address book.*

emma®

[Subscribe](#) to our email list.