

Warm Winter Wishes



We Need Fleece!

Please consider donating fleece to The Sewing Labs for our Fleece Hats & Scarves for the Homeless Project!



New Partnership

Our winter-time community outreach projects have caught the attention of many new and existing volunteers! Some of that can be attributed to the KMBC 9 news piece that aired on January 18th announcing our recent partnership with Volunteer KC and the KC Community Bag. To learn

more about how we are working with VKC, [click here](#).



KMBC 9 News Filming @ The Sewing Labs



Community Bag, Fleece Hats & Scarves

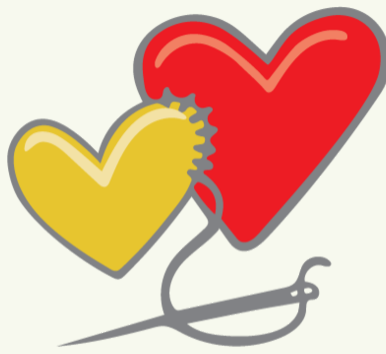
Fleece Hats & Scarves

This is TSL's second year making [fleece hats and scarves for the homeless](#). This year, we are putting the hats and scarves into the KC Community Bags and Volunteer KC is ALREADY DISTRIBUTING the goods to the homeless!

Please consider making a donation of fleece so we can get as many hats and scarves into the hands of those who need it most! Half a yard of fleece will make one hat and scarf set.

Don't have fleece to give? Please consider making a monetary donation to The Sewing Labs to support this great project. [Click here](#) to make a donation.

We Are SEW Grateful For Your Support!



The Sewing Labs

Create. Inspire. Thrive.

The Sewing Labs
526 Campbell Street
Kansas City, MO 64106
816.888.3051

<https://thesewinglabs.community>



Share this email:



[Manage](#) your preferences | [Opt out](#) using TrueRemove™

Got this as a forward? [Sign up](#) to receive our future emails.

View this email [online](#).

526 Campbell
Kansas City, MO | 64106 United States

This email was sent to .

To continue receiving our emails, add us to your address book.

[Subscribe](#) to our email list.